

Diagnosis and management of Duchenne muscular dystrophy, part 1: diagnosis, and pharmacological and psychosocial management



Katharine Bushby, Richard Finkel, David J Birnkrant, Laura E Case, Paula R Clemens, Linda Cripe, Ajay Kaul, Kathi Kinnett, Craig McDonald, Shree Pandya, James Poysky, Frederic Shapiro, Jean Tomezsko, Carolyn Constantin, for the DMD Care Considerations Working Group*

Duchenne muscular dystrophy (DMD) is a severe, progressive disease that affects 1 in 3600–6000 live male births. Although guidelines are available for various aspects of DMD, comprehensive clinical care recommendations do not exist. The US Centers for Disease Control and Prevention selected 84 clinicians to develop care recommendations using the RAND Corporation–University of California Los Angeles Appropriateness Method. The DMD Care Considerations Working Group evaluated assessments and interventions used in the management of diagnostics, gastroenterology and nutrition, rehabilitation, and neuromuscular, psychosocial, cardiovascular, respiratory, orthopaedic, and surgical aspects of DMD. These recommendations, presented in two parts, are intended for the wide range of practitioners who care for individuals with DMD. They provide a framework for recognising the multisystem primary manifestations and secondary complications of DMD and for providing coordinated multidisciplinary care. In part 1 of this Review, we describe the methods used to generate the recommendations, and the overall perspective on care, pharmacological treatment, and psychosocial management.

Introduction

Duchenne muscular dystrophy (DMD; Online Mendelian Inheritance in Man [OMIM] reference 310200) is an X-linked disease that affects 1 in 3600–6000 live male births.^{1–3} Affected individuals can have mildly delayed motor milestones and most are unable to run and jump properly due to proximal muscle weakness, which also results in the use of the classic Gowers' manoeuvre when arising from the floor. Most patients are diagnosed at approximately 5 years of age, when their physical ability diverges markedly from that of their peers.⁴ Untreated, muscle strength deteriorates, and boys require the use of a wheelchair before their teens. Respiratory, orthopaedic, and cardiac complications emerge, and without intervention, the mean age at death is around 19 years. Non-progressive cognitive dysfunction might also be present.⁵

DMD occurs as a result of mutations (mainly deletions) in the dystrophin gene (*DMD*; locus Xp21.2). Mutations lead to an absence of or defect in the protein dystrophin, which results in progressive muscle degeneration leading to loss of independent ambulation by the age of 13 years.⁶ Variable phenotypic expression relates mainly to the type of mutation and its effect on the production of dystrophin. Milder allelic forms of the disease also exist, including intermediate muscular dystrophy and Becker muscular dystrophy, which cause loss of ambulation at 13–16 years or over 16 years, respectively. With the use of corticosteroids to prolong ambulation, these boundaries are less distinct. However, that these phenotypes exist is important, and if progression is milder than expected for DMD, assessment for these alternative forms should be done. Some patients with dystrophin mutations also have an isolated cardiac phenotype.^{7–12} Approximately 10% of female carriers show some disease manifestations that might include

or even exclusively affect cognitive and/or cardiac function.^{13–15} Although the disorder in affected girls is usually much milder than in boys, a few cases do have disease severity similar to that seen in affected boys.^{13–15} Apart from a few cases associated with chromosomal rearrangements, most girls are assumed to be affected as a result of skewed X inactivation.

The molecular basis of DMD has been known for over 20 years.^{16,17} Many promising therapeutic strategies have since been developed in animal models.¹⁸ Human trials of these strategies have started, leading to the hope of definitive treatments for this currently incurable disease.¹⁸ Although specific treatments for DMD have not yet reached the clinic, the natural history of the disease can be changed by the targeting of interventions to known manifestations and complications. Diagnosis can be swiftly reached; the family and child can be well supported, and individuals who have DMD can reach their full potential in education and employment. Corticosteroid, respiratory, cardiac, orthopaedic, and rehabilitative interventions have led to improvements in function, quality of life, health, and longevity, with children who are diagnosed today having the possibility of a life expectancy into their fourth decade.^{19–32}

Advocacy organisations report variable and inconsistent health care for individuals with DMD. Although anticipatory and preventive clinical management of DMD is essential, recommendations exist in only a few areas. Addressing the many complications of DMD in a comprehensive and consistent way is crucial for planning multicentre trials, as well as for improving care worldwide.

The development and implementation of standardised care recommendations were initially emphasised by stakeholders in the DMD community, including government agencies, clinicians, scientists, volunteer

Published Online
November 30, 2009
DOI:10.1016/S1474-4422(09)70271-6
See Online/Review
DOI:10.1016/S1474-4422(09)70272-8

*Members listed at end of paper

Institute of Human Genetics, Newcastle University, Newcastle upon Tyne, UK (K Bushby MD); Division of Neurology (R Finkel MD) and Divisions of Pulmonary Medicine and Gastroenterology, Hepatology, and Nutrition (J Tomezsko PhD), Children's Hospital of Philadelphia, Philadelphia, PA, USA; Division of Pediatric Pulmonary Medicine, MetroHealth Medical Center, Case Western Reserve University, Cleveland, OH, USA (D J Birnkrant MD); Division of Physical Therapy, Department of Community and Family Medicine, Duke University, Durham, NC, USA (L E Case DPT); Department of Neurology, Molecular Genetics and Biochemistry, University of Pittsburgh, and Department of Veteran Affairs Medical Center, Pittsburgh, PA, USA (P R Clemens MD); Division of Cardiology (L Cripe MD, K Kinnett MSN) and Division of Pediatric Gastroenterology, Hepatology, and Nutrition (A Kaul MD), Cincinnati Children's Hospital Medical Center, Cincinnati, OH, USA; Department of Physical Medicine and Rehabilitation, University of California, Davis, CA, USA (C McDonald MD); Department of Neurology, University of Rochester, Rochester, NY, USA (S Pandya PT); School of Allied Health Sciences, Baylor College of Medicine, Houston, TX, USA (J Poysky PhD); Department of Orthopaedic Surgery, Children's Hospital Boston, Boston, MA, USA (F Shapiro MD); National Center on Birth Defects and

Developmental Disabilities,
Centers for Disease Control and
Prevention, Atlanta, GA, USA
(C Constantin PhD)

Correspondence to:
Katharine Bushby, Newcastle
University, Institute of Human
Genetics, International Centre
for Life, Centre Parkway,
Newcastle upon Tyne NE1 3BZ,
UK

kate.bushby@newcastle.ac.uk

For OMIM see <http://www.ncbi.nlm.nih.gov/omim/>

For the Muscular Dystrophy
Association see <http://www.mda.org/>

For Parent Project Muscular
Dystrophy see <http://www.parentprojectmd.org/>

For TREAT-NMD see <http://www.treat-nmd.eu/>

See Online for webappendix

health agencies, and advocacy organisations such as the Muscular Dystrophy Association and Parent Project Muscular Dystrophy. In the USA, the Muscular Dystrophy Community Assistance, Research, and Education Amendments of 2001 directed increased research and public health initiatives towards the muscular dystrophies.³³ Development of these care recommendations are part of these activities. In Europe, a European Union-funded Network of Excellence (EC036825), TREAT-NMD, received funding to advance the treatment and care for neuromuscular diseases, with standardisation of care in DMD as one of their priorities. The US Centers for Disease Control and Prevention (CDC) has facilitated the development of these care recommendations as a collaborative effort among these stakeholders.

The aim of this Review is to present recommendations for DMD management based on analysis of independent expert ratings of assessments and interventions. These recommendations focus attention on the many positive areas promoting efficient diagnosis and effective management in DMD. They are intended for the wide range of health-care providers who work with individuals who have DMD and their families, from primary care to the multidisciplinary team. The purpose of these recommendations is to provide a framework for recognising the primary manifestations and possible complications and for planning optimum treatment across different specialties with a coordinated multidisciplinary team. In the first part of this Review, we describe the methods used, and provide recommendations for diagnosis, pharmacological treatment, and psychosocial management. In the second part,³⁴ we will discuss the implementation of multidisciplinary care.

Methods

Very few large-scale randomised controlled trials (RCTs) have been done in DMD. In areas in which such trials exist (eg, for the use of corticosteroids), the evidence that can be derived from these studies has been emphasised. For most of the other recommendations, the CDC chose the RAND Corporation–University of California Los Angeles Appropriateness Method (RAM) to guide their development.³⁵ RAM combines scientific evidence with the collective judgment of experts to determine the appropriateness and necessity of clinical assessments and interventions. Unlike consensus-driven methods, RAM preserves the integrity of individual expert opinion through anonymous and independent ratings, allowing areas of agreement, as well as areas of disagreement and uncertainty, to be revealed.³⁵

An international coalition of 84 experienced practitioners, who represent the specialties involved in the delivery of DMD care, were nominated by their peers, and selected by the CDC and steering committee to serve on one or more panels. Experts independently rated interventions and assessments used in DMD manage-

ment for appropriateness and necessity based on clinical scenarios presented in a matrix format. The matrices were developed from an extensive literature review for articles pertaining to interventions and assessments for DMD, augmented by expert opinion. Of the 1981 articles reviewed, the CDC used 489 articles in its final literature review. On completion of the literature review, the CDC and the expert panellists identified signs and symptoms that trigger the use of an assessment tool or intervention, and any clinical factors that should be taken into account. On the basis of expert input, the CDC organised the clinical factors and signs or symptoms into a matrix format. Each matrix addressed a particular assessment or intervention and included a clinical question, objective, or major presenting symptom (see webappendix for clinical scenarios reviewed).

The experts then rated the matrices in three rounds of ratings: two for appropriateness and one for necessity. In round 1, each expert anonymously rated the appropriateness of using a particular assessment tool or intervention in specific clinical scenarios on an ordinal scale of 1–9. An intervention or assessment tool was designated as “appropriate” if the expected health benefit outweighs the anticipated risk, irrespective of financial implications.³⁵ The CDC tabulated and analysed median ratings for each scenario according to RAM guidelines. During in-person meetings, the expert panels discussed the results and edited the matrices for round 2 for appropriateness. After round 2, the CDC categorised the assessments and interventions as “appropriate”, “inappropriate”, or “uncertain”, and identified any disagreement among the experts.

In round 3, the experts rated the assessments and interventions deemed appropriate without panel disagreement in round 2 for necessity on a similar 1–9 scale. Experts could rate an intervention or assessment tool as “necessary” if it met the following four criteria: (1) intervention or assessment tool was rated “appropriate” without disagreement; (2) it would be improper not to offer the intervention or assessment tool under the clinical scenario proposed; (3) there is a reasonable chance that the intervention or assessment tool will benefit the patient; and (4) the magnitude of the expected benefit is not small.³⁵ See webappendix for examples of matrices, analyses, and results. After three rounds of independent ratings, the expert panellists reviewed and interpreted the data to develop the recommendations into a clinically relevant document.

This two-part Review concentrates on those assessments and interventions that were found to be “necessary”, “appropriate”, and “inappropriate”, as defined by RAM. Areas of disagreement or uncertainty are underscored if particularly pertinent to practice. These recommendations are therefore based on the RAM results except in cases in which clinical trial evidence exists, in particular RCT data. We have noted the rare instances in which there is RCT evidence to

support the recommendations. During the development of the recommendations, the expert panels identified clinical questions not covered in the original matrices. If indicated, RAM results were supplemented by literature and expert opinion to provide a comprehensive picture of recommended care for DMD.

The multidisciplinary team and the toolkit

Each panel defined the toolkit of assessments and interventions applicable to DMD management (figure 1). The multidisciplinary approach to caring for patients with DMD and the range of expertise required are key features of this process. The patient and family should actively engage with the medical professional who

coordinates clinical care. Depending on the patient's circumstances, such as area/country of residence or insurance status, this role might be served by, but is not limited to, a neurologist or paediatric neurologist, rehabilitation specialist, neurogeneticist, paediatric orthopaedist, paediatrician, or primary-care physician. This physician must be aware of the potential issues and be able to access the interventions that are the foundations for proper care in DMD. These include health maintenance and proper monitoring of disease progression and complications to provide anticipatory, preventive care and optimum management. Input from different specialties and the emphasis of interventions will change as the disease progresses (figure 2).

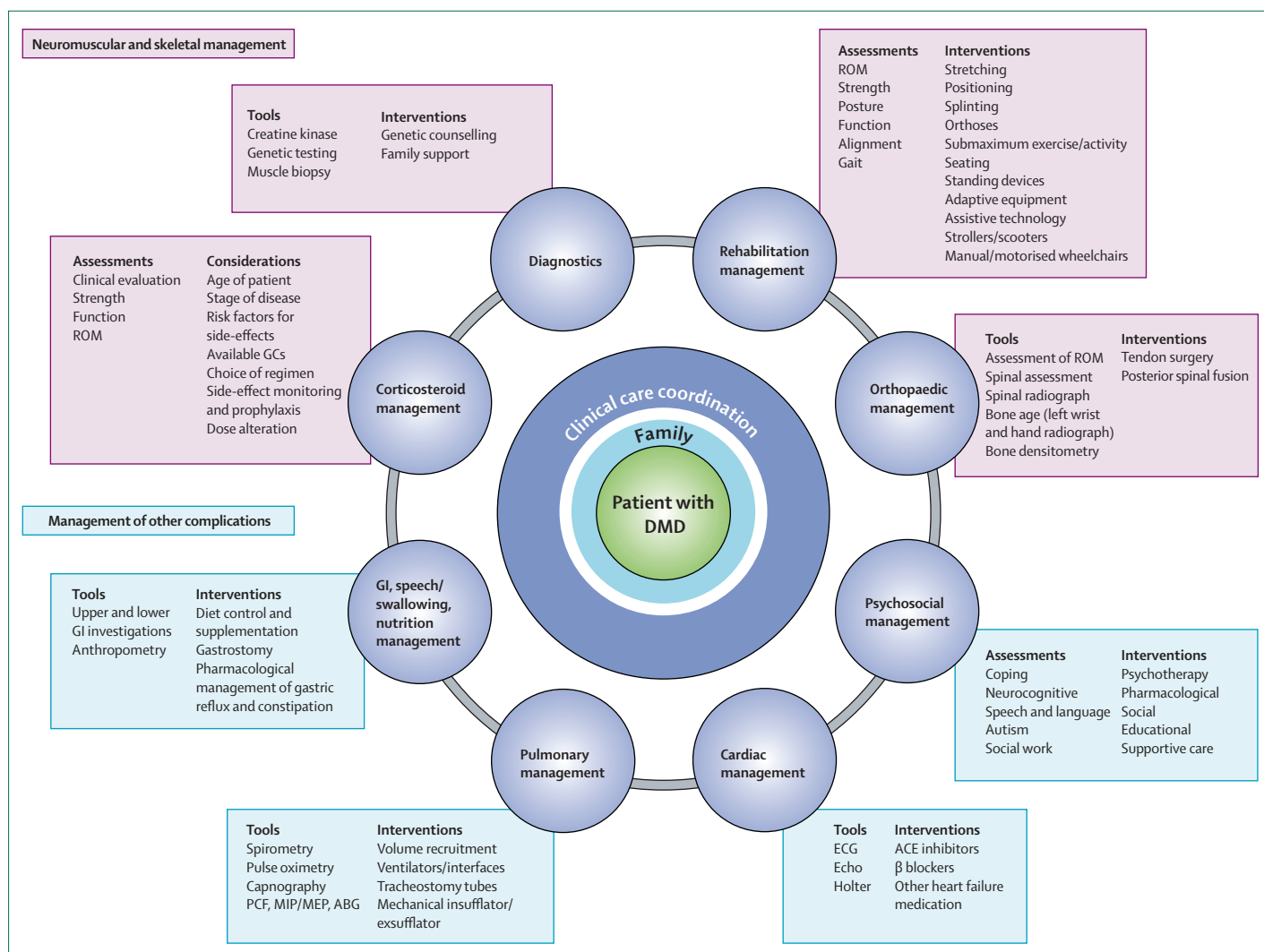


Figure 1: Interdisciplinary management of DMD

Coordination of clinical care is a crucial component of the management of DMD. This care is best provided in a multidisciplinary care setting in which the individual and family can access expertise for the required multisystem management of DMD in a collaborative effort. A coordinated clinical care role can be provided by a wide range of health-care professionals depending on local services, including (but not limited to) neurologists or paediatric neurologists, rehabilitation specialists, neurogeneticists, paediatricians, and primary-care physicians. It is crucial that the person responsible for the coordination of clinical care is aware of the available assessments, tools, and interventions to proactively manage all potential issues involving DMD. ABG=arterial blood gas. ACE=angiotensin-converting enzyme. DMD=Duchenne muscular dystrophy. Echo=echocardiogram. ECG=electrocardiogram. GC=glucocorticoids. GI=gastrointestinal. MEP=maximum expiratory pressure. MIP=maximum inspiratory pressure. PCF=peak cough flow. ROM=range of motion.

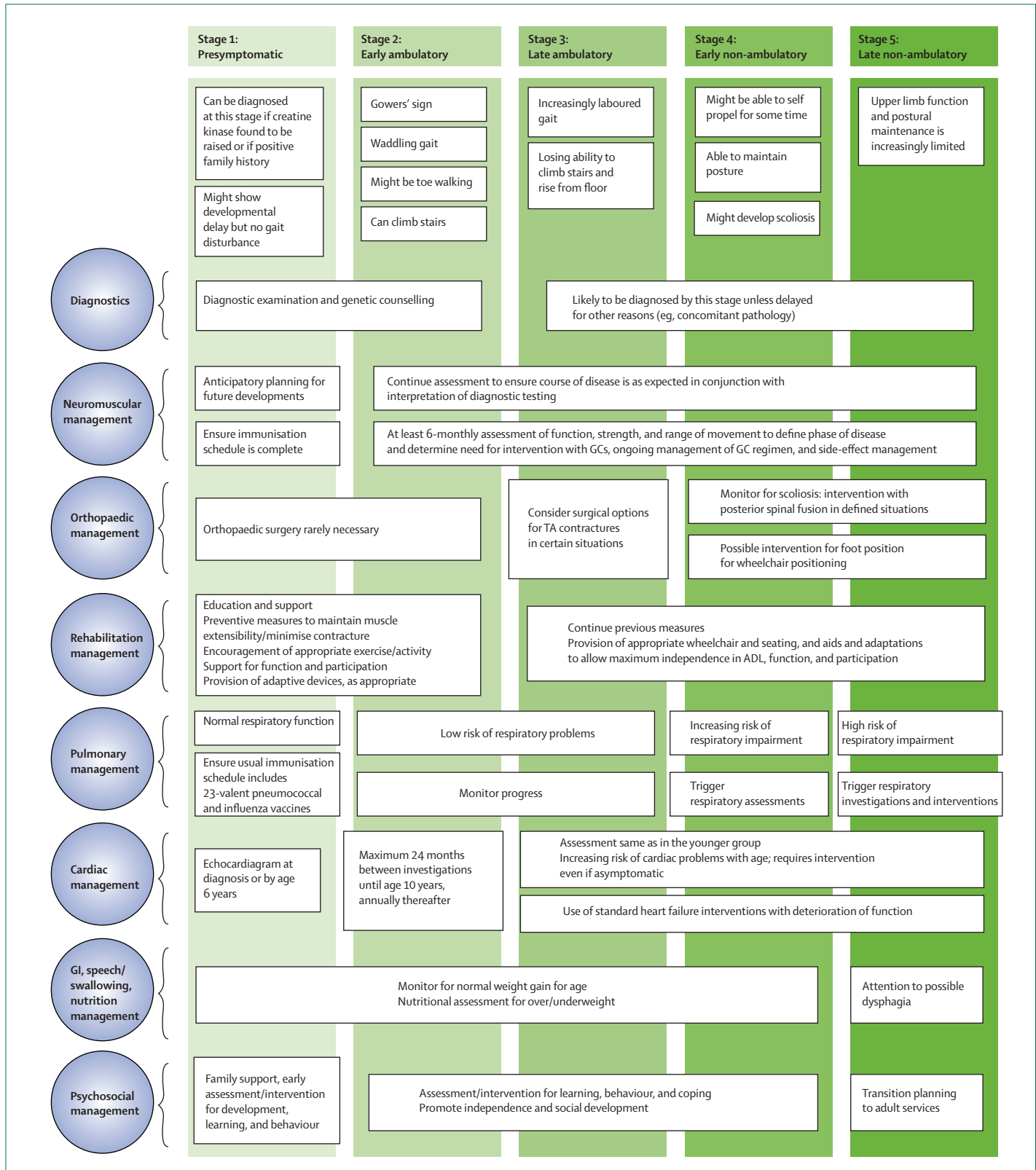


Figure 2: Stages of disease and care considerations
 ADL=activities of daily living. GCs=glucocorticoids. GI=gastrointestinal. TA=tendo-Achilles.

At a practical level, management of the patient with DMD in the clinic requires a physically accessible environment and parking structure, with proper equipment (eg, mechanical hoist or sliding board) and trained personnel available for the safe transfer of the non-ambulatory patient. The expertise and means to obtain accurate measures of weight, height, and vital signs with appropriately trained staff are essential. Special weight scales that accommodate wheelchairs are available. Height measurements in patients with severe scoliosis are not accurate and can be replaced by arm-span measurements.

Diagnosis of DMD

The aim of care around diagnosis is to provide an accurate and prompt diagnosis, allowing initiation of appropriate interventions, continuing support and education, and minimising the length and impact of a potentially protracted diagnostic process. Diagnosis should be done by a neuromuscular specialist who can assess the child clinically and can rapidly access and interpret appropriate investigations in the context of the clinical presentation. Family follow-up and support after diagnosis will often

be augmented by support from geneticists and genetic counsellors.

When to suspect DMD

Suspicion of the diagnosis of DMD (figure 3) should be considered irrespective of family history and is usually triggered in one of three ways: (1) most commonly, the observation of abnormal muscle function in a male child; (2) the detection of an increase in serum creatine kinase tested for unrelated indications; or (3) after the discovery of increased transaminases (aspartate aminotransferase and alanine aminotransferase, which are produced by muscle as well as liver cells). The diagnosis of DMD should thus be considered before liver biopsy in any male child with increased transaminases. Initial symptoms might include delayed walking, frequent falls, or difficulty with running and climbing stairs. Although DMD is typically diagnosed at around 5 years of age, the diagnosis might be suspected much earlier because of delays in attainment of developmental milestones, such as independent walking or language; such delays have been documented prospectively by following patients with

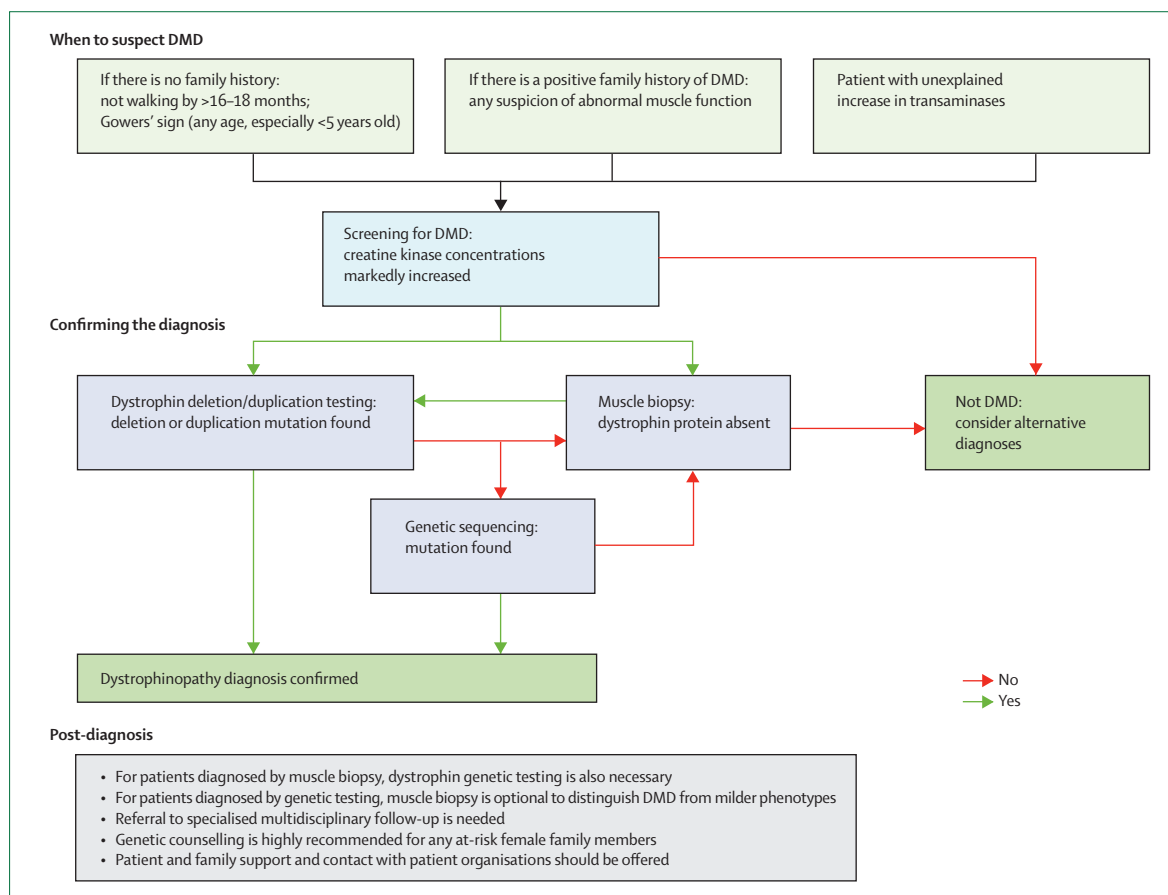


Figure 3: Diagnosis of DMD: the pathway from suspicion of the diagnosis to its confirmation

In cases in which DMD is suspected, the route for further diagnostic testing depends on the increase in CK. In rare cases, a dystrophinopathy diagnosis could be confirmed by absent dystrophin protein on muscle biopsy even if all genetic testing is negative. If a dystrophinopathy diagnosis is not confirmed by either muscle biopsy or genetic testing, the diagnosis of alternative muscular dystrophies is complex and requires specialised input. CK=creatine kinase. DMD=Duchenne muscular dystrophy.

DMD identified by newborn screening.³⁶ The presence of Gowers' sign in a male child should trigger the diagnostic investigation of DMD, especially if the child also has a waddling gait. Toe walking might be present but is not additionally helpful in deciding whether to suspect DMD. In the presence of a positive family history of DMD, there should be a low threshold for testing creatine kinase, although this will be influenced by the age of the child. In a child less than 5 years of age, suspicion of DMD probably cannot be excluded completely by a normal muscle examination. However, with increasing age, a normal muscle examination renders the chance of a child having DMD progressively less likely. A boy older than 10 years of age with normal muscle function is thus highly unlikely to have DMD.

Confirmation of the diagnosis

The route to confirming the diagnosis (figure 3) depends on local availability of rapid and reliable testing, which must be interpreted alongside the clinical presentation owing to the range of severity possible with dystrophin mutations. Testing for a *DMD* mutation in a blood sample is always necessary even if DMD is first confirmed by the absence of dystrophin protein expression on muscle biopsy. The results of genetic testing provide the clinical information required for genetic counselling, prenatal diagnosis, and consideration for future mutation-specific therapies. Different types of mutations in *DMD* can be the genetic basis for DMD.¹² The genetic tests commonly used to identify dystrophin mutations are multiplex PCR,³⁷ multiplex ligation-dependent probe amplification,³⁸ single-condition amplification/internal primer,^{39,40} and multiplex amplifiable probe hybridisation.⁴⁰ Multiplex PCR is widely available and the least expensive, but only detects deletions and does not cover the whole gene, so that a deletion might not always be fully characterised. Multiplex ligation-dependent probe amplification and amplifiable probe hybridisation will detect deletions and duplications and cover all exons, and single-condition amplification/internal primer will detect deletions and provide sequence data. None of these techniques is universally available.

If analysis by one or more of these techniques leads to the identification and full characterisation of a dystrophin mutation, then no further testing is required. If deletion/duplication testing is negative, then dystrophin gene sequencing should be done to look for point mutations or small deletions/insertions.^{39,40} Full characterisation of the mutation (deletion endpoints or exact position of any point mutation) is required to allow correlation of the predicted effect of the mutation on the reading frame of the gene, which is the major determinant of the phenotypic variability seen in dystrophinopathy,^{19,21,22} as well as to determine eligibility for the mutation-specific treatments currently in trials.⁴¹⁻⁴³

A muscle biopsy could be done, depending on the clinical situation, availability of genetic testing, and the facilities in

the centre where the patient is seen.⁴⁴ An open muscle biopsy is necessary if the differential diagnosis includes DMD among other diagnostic possibilities, such as other types of muscular dystrophy, so that adequate amounts of tissue will be available for further analysis. A needle biopsy might be appropriate if testing is only for DMD or if the clinician is skilled in taking multiple cores of tissue from paediatric patients.^{45,46} In those centres where it is done, the conchotome technique has the advantage of providing a larger sample than a single-core needle biopsy, and does not require an open surgical procedure.^{47,48}

The key tests done on the muscle biopsy for DMD are immunocytochemistry and immunoblotting for dystrophin, and should be interpreted by an experienced neuromuscular pathologist.⁷⁻⁹ A muscle biopsy can provide information on the amount and molecular size of dystrophin, as long as the protein is present.^{7-9,12,44} Differentiating total and partial absence of dystrophin can help to distinguish DMD from a milder dystrophinopathy phenotype.^{7-9,12,44} Electron microscopy is not required to confirm DMD.

Genetic testing after a positive biopsy diagnosis of DMD is mandatory. A muscle biopsy is not necessary if a genetic diagnosis is secured first, particularly as some families might view the procedure as traumatic. However, if genetic testing has been done and no mutation identified, but creatine kinase concentrations are increased and signs or symptoms consistent with DMD are present, then the next necessary diagnostic step is to do a muscle biopsy. This is also the case if there is a family history of DMD and a suspicion of the diagnosis, but no family mutation is known.

Whereas electromyography and nerve-conduction studies have been a traditional part of the assessment of a child with a suspected neuromuscular disorder, these tests are not believed by the expert panels to be now indicated or necessary for the specific assessment of DMD.

Neuromuscular and skeletal assessments

Clinical assessment in DMD includes taking a standard medical and family history and undertaking a physical examination, with a focus on the musculoskeletal system and related functional impairments. The neuromuscular specialist should be experienced in the expected disease course for DMD to understand the implications of a deviation from this course (eg, the possibility that a milder course might indicate a less severe dystrophinopathy or that more severe disease might suggest concomitant morbidity). This judgment will be informed by the results of regular assessments of disease progression (ie, strength, range of motion, posture, gait, timed testing),⁴⁹ monitoring of ability to cope with activities of daily living, and application of motor function scales. These assessments, which are also used to inform decisions about therapeutic interventions and monitor response to therapy, are

	Method	Aim of testing	Ambulatory	Non-ambulatory
Strength testing	Manual muscle testing (MRC scale) ⁵⁰ Quantitative myometry (beneficial if muscle strength 3–5 on MRC scale)*	Serial assessment: to identify outliers from expected clinical course; to monitor disease progression and predict functional losses; to assess response to treatment; and to monitor muscle imbalance	Test lower extremity strength by manual muscle testing every 6 months	Early stages: test upper and lower extremity strength every 6 months Later stages: value of testing is less certain
Range of motion	Goniometry ⁵¹	Baseline: to identify emerging muscle hypoextensibility and joint contractures that might contribute/lead to functional deterioration or musculoskeletal or integumentary problems To identify need for additional or altered therapeutic/surgical intervention (ie, orthoses, splinting, use of standers, iliotibial band lengthening)	Lower extremities: hip, knee, ankle joints; iliotibial band; hamstrings, gastrocnemius	Lower extremities: hip, knee, ankle joints; iliotibial band; hamstrings, gastrocnemius Upper extremities: elbow, wrist, long finger flexors
Timed testing	Standardised use of timed function tests ^{50,52}	Easy and relevant measure of daily functional status; responsive to change	Timed 10 m walk, timed Gowers' manoeuvre, time to climb 4 stairs, time to rise from chair, 6-min walk test Time to put on a shirt might be relevant in late ambulatory stage	Time to put on a shirt might be relevant in early non-ambulatory stage, timed testing not applicable in late non-ambulatory stage
Activities of daily living	Assessment of impairment in daily activities in the home, school, and community settings	Highly relevant to targeted input with aids, adaptations, and access to environmental controls	Frequency of falls, step activity monitoring, self-care skills, writing, computer use Functioning in school and community settings	Self-care skills, writing, computer use, control of manual and electric wheelchair Functioning in school and community settings
Motor function scales	Assessment of motor function in specific domains to give a composite score	Allows monitoring of progression and response to therapy	Vignos lower extremity scale, North Star Ambulatory Assessment, motor function measure	Brooke upper extremity scale, Egen Klassifikation functional assessment, Hammersmith motor scales, motor function measure

Routine clinic appointments should be every 6 months, unless otherwise specified. Specialist physical and occupational therapy assessments are recommended every 4 months. MRC=UK Medical Research Council. *Although the panel found these tests to be appropriate assessment tools, they are used more typically in research than in clinical settings.

Table 1: Suggested neuromuscular assessments for patients with Duchenne muscular dystrophy

described in table 1. These tests require training and experience to maintain competence. Choice of tests to use in any particular category will be influenced by local factors; consistency within an individual clinic is important to allow comparison over time.

Pharmacological interventions for muscle strength and function

Pharmacological intervention has begun to change the natural history of DMD, and further advances and more effective treatment of the underlying pathology of DMD should continue to offer an improved course, potentially including small-molecule and gene therapies. The most devastating and obvious effect of DMD is on the skeletal musculature with resulting loss of strength and function. The progression of muscle degeneration in DMD is well documented both in terms of pathophysiology and pathokinesiology (with a proximal-to-distal progression of muscle weakness, leading to progressive losses in activities of elevation against gravity with eventual loss of ambulation).^{53–58} Several panels have addressed treatments aimed at optimising strength and function, which include pharmacological interventions, such as glucocorticoids, and physical therapy interventions (discussed in part 2 of

this Review³⁴) involving the use of gentle exercise and activity, and management of the musculoskeletal system to prevent/minimise contracture and deformity.

Glucocorticoids

Glucocorticoids are the only medication currently available that slows the decline in muscle strength and function in DMD,^{19,20,59–63} which in turn reduces the risk of scoliosis and stabilises pulmonary function.^{61,62} Cardiac function might also improve, with limited data to date indicating a slower decline in echocardiographic measures of cardiac dysfunction, although these measures are not necessarily predictive of the delay in cardiac symptoms, signs, or cardiac-related mortality.^{25,62}

Initial RCTs in patients treated with prednisone for up to 6 months showed an improvement in muscle strength, with 0.75 mg/kg daily having the most favourable profile.⁶⁴ Use of a higher dose of 1.5 mg/kg daily was no more effective,⁶⁵ and a lower dose of 0.3 mg/kg daily was less beneficial. Daily administration was more effective than treatment on alternate days.⁶⁶ Prednisolone is often used in Europe instead of prednisone. Deflazacort, a similar glucocorticoid available in many countries, but not currently approved

for use by the US Food and Drug Administration or the CDC in the USA, has been shown to have a similar efficacy at a daily dose of 0.9 mg/kg and has a slightly different chronic risk profile.^{67,68}

Subsequent longer term studies on the use of prednisone/prednisolone and deflazacort have focused more on their effect in prolonging ambulation than on the short-term improvement in strength (ie, decline in motor function still occurs, but more slowly).^{69,70} More recently, continued treatment after the patient becomes non-ambulatory has also shown reduction in the risk of progressive scoliosis and stabilisation of pulmonary function test variables.^{61,62}

On the basis of this convincing literature, practice parameter guidelines, and personal experience, the panel strongly urges consideration of glucocorticoid therapy in all patients who have DMD.^{19,20} The rest of this section provides guidance on what clinical information is necessary to determine when to start glucocorticoid medication and how to monitor and manage side-effects.

The goal of the use of glucocorticoids in the ambulatory child is the preservation of ambulation and the minimisation of later respiratory, cardiac, and orthopaedic complications, taking into account the well-described risks associated with chronic glucocorticoid administration. If such issues are pre-existing, the risk of side-effects might be increased (table 2). Particular care needs to be taken with such patients in deciding which glucocorticoid to choose, when to initiate treatment, and how best to monitor the child for any problems. A high index of suspicion for steroid-related side-effects needs to be maintained at all times. Prevention and management of side-effects needs to be proactive.⁵⁹ Families should be provided with a steroid card or similar notification that the child is on steroids, listing emergency-care considerations in the setting of acute medical presentation, fracture, serious infection, need for surgery, or general anaesthesia, to alert any medical professional with whom the child might come into contact.

Initiation of glucocorticoid therapy

No generally accepted guidelines exist in the literature about the best time to initiate glucocorticoid therapy in an ambulatory boy with DMD. The panel's opinion, derived through the RAM process, is that the timing of initiation of glucocorticoid therapy must be an individual decision, based on functional state and also considering age and pre-existing risk factors for adverse side-effects. Recognition of the three phases of motor function in DMD (making progress, plateau, and decline) helps the clinician to make this decision (figure 4). In all cases, the recommended national immunisation schedule should be complete and varicella immunity should be established before steroids are started.

Initiation of glucocorticoid treatment is not recommended for a child who is still gaining motor skills, especially when he is under 2 years of age. The

typical boy with DMD continues to make progress in motor skills until approximately age 4–6 years, albeit at a slower rate than his peers.⁸¹ The eventual use of glucocorticoids should be discussed with caregivers at this stage, in anticipation of the plateau in motor skills and subsequent decline. The plateau phase, which might last only a few months, can be identified when there is no longer progress in motor skills, but prior to decline, as determined by history and timed testing (table 1). The child who takes longer in timed testing, loses a skill (such as climbing stairs), shows less endurance, or has more falls, is in a decline phase. Once the plateau phase has been clearly identified, usually at age 4–8 years, the clinician should propose initiation of glucocorticoids unless there are substantial reasons (such as major pre-existing risk factors for side-effects) to wait until the decline phase. Starting steroids when in the full decline phase or when ambulation is more marginal is still recommended, but might be of more limited benefit.

These recommendations for when to initiate glucocorticoid treatment should be interpreted as a minimum threshold. Some practitioners favour a more aggressive approach with earlier initiation of treatment when clinical symptoms first appear, although there are no published data to support this, so the panel did not believe it appropriate to endorse earlier glucocorticoid treatment.

Because the decision to initiate glucocorticoids is based on serial assessment as well as parental report, additional care is required in initiating glucocorticoid therapy at an initial visit or at a second-opinion consultation. The assessment of the child's course of motor function (making progress, plateau, and decline) is based purely on the caregiver's history at a first visit, so care should be exercised in making such conclusions in a child aged under 6 years. If glucocorticoids are initiated at a first visit, we suggest that a physician be identified at that time who will be in charge of monitoring the child, particularly if the physician making the recommendation cannot fulfil this role.

Long-term use of glucocorticoids requires much commitment on the part of the family. Essential issues for discussions should include potential side-effects, the obligation to closely monitor and manage any adverse issues that might arise, and the requirement to have the child followed closely by their primary-care physician and specialty health-care team.

Use of glucocorticoids after loss of ambulation

In patients who have used glucocorticoids while ambulatory, many experts continue medication after loss of ambulation,⁶² with the goal of preserving upper limb strength, reducing progression of scoliosis, and delaying decline in respiratory and cardiac function.^{19,61,62}

Indications for initiation of glucocorticoids in non-ambulatory patients are more relative than absolute. The effectiveness of glucocorticoid treatment in

preventing scoliosis or in stabilising cardiac or respiratory function in this setting is not known; this issue thus warrants further study. However, limited data from trials suggest short-term stabilisation of pulmonary function in the early non-ambulatory patient.⁶⁵ If the patient and caregiver request the initiation of steroids, daily dosing is indicated if there is a stable functional course. A daily dose is also appropriate in the presence of declining function. However, there is greater need in this group to consider the effect of pre-existing risk factors, such as

behavioural issues, fracture risk, or obesity; side-effects require close monitoring. Whether patients with more limited arm function and advanced pulmonary disease (such as those who already require nocturnal bi-level positive airway pressure assistance) can benefit from glucocorticoid therapy is uncertain. The presence of an abnormal echocardiogram or symptoms of heart failure are not contraindications to glucocorticoid therapy, but use of glucocorticoids if advanced cardiomyopathy is present might carry higher risk of side-effects.

	Recommended monitoring	Intervention
Constitutional and cosmetic		
Cushingoid features, ¹⁹ obesity ^{70,71}	Particular vigilance needed if patient, parents, or siblings are obese Dietary advice to be reinforced before starting steroids; warn about increased appetite	Implement proactive dietary management for the entire family, not just the patient Consider change from prednisone to deflazacort Select an alternative regimen
Hirsutism ¹⁹	Forewarn parents	Does not usually occur to an extent that warrants a change in medication
Acne, tinea, warts	More notable in teenagers	Use ancillary treatment measures (topical prescription) and do not rush to change the GC regimen unless the boy is emotionally distressed
Growth retardation ^{72,73}	Monitor height at least every 6 months as part of general care (stature tends to be small in DMD even without steroid treatment ⁶¹)	Consider endocrine evaluation if growth plateaus
Delayed puberty	Monitor Tanner stage Identify any family history of delayed sexual maturation	Consider endocrine assessment if notably delayed or patient is upset by the delay
Adverse behavioural changes ^{19,74-76}	Identify any baseline mood, temperament, ADHD issues, and advise parents that these often transiently worsen in the initial 6 weeks on GC therapy	Decide whether baseline issues should be treated before starting GC therapy (eg, ADHD counselling or prescription) Consider changing timing of GC medication to later in the day Consider behavioural health referral
Immune/adrenal suppression ⁷⁷	Advise parents of risk of serious infection and need to promptly address minor infection Advise parents to inform all medical personnel that their child is on steroids and carry steroid alert card Ensure that the GC is not stopped abruptly	Obtain varicella immunisation before starting GC therapy; confirm with protective serum titre Engage in tuberculosis surveillance Obtain infectious diseases consultation if serious infection occurs Substitute prednisone equivalent if deflazacort is temporarily unavailable Implement intravenous stress-dose hydrocortisone or methylprednisolone coverage for surgery or major illness (no accepted treatment strategy; anaesthesia or endocrine consultation recommended) Give intravenous coverage if nothing by mouth
Hypertension ⁷⁶	Monitor blood pressure as percentile for height and sex at each clinic visit	If blood pressure >99%, reduce salt intake, weight reduction If ineffective, refer for possible ACE inhibitor or β blocker medication
Glucose intolerance	Urine dipstick for glucose at clinic visits Enquire about polyuria, polydipsia	If urine is glucose-positive, then try fasting or post-prandial blood glucose, and if abnormal, then seek an endocrine consultation
GERD	Enquire about GERD symptoms (heartburn) Advise parents to report symptoms	Avoid NSAIDs Prescribe ranitidine or proton-pump inhibitor and antacid if symptomatic
Peptic ulcer disease ⁷⁸	Advise parents of risk and to report symptoms History of gastritis, GERD, abdominal pain, or faecal blood Test stool for blood if anaemic or suggestive history	Avoid NSAIDs Prescribe ranitidine or proton-pump inhibitor and antacid if symptomatic Seek gastrointestinal consultation
Cataracts	Annual ophthalmological examination	Consider switching from deflazacort to prednisone if cataracts evolve that affect vision Seek ophthalmology consultation
Bone demineralisation and increased fracture risk ^{*76,79}	Take careful fracture history Annual DEXA to monitor bone density Annual monitoring of 25-hydroxy vitamin D blood concentration (ideally late winter in seasonal climates) and supplement with vitamin D3 if level is <32 nmol/L Dietitian should assess calcium and vitamin D intake	For 25-hydroxy vitamin D concentration 20–31 nmol/L, give 1000 IU orally twice daily, for <20 nmol/L, give 2000 IU orally twice daily Recheck serum 25-hydroxy vitamin D concentration again after 3 months on therapy Encourage weight-bearing activities Take multivitamin supplements with vitamin D3 Consider bisphosphonates, such as pamidronate
Myoglobinuria ⁸⁰	Enquire about abnormal coloration of urine after exercise, urine testing	Advise avoidance of excessive eccentric (eg, descending stairs, squatting down, trampolining) and resistive exercise Commence renal investigations if persistent

Common chronic side-effects of high-dose GC administration in growing children are listed for the ambulatory and non-ambulatory patient who has DMD, assuming typical initiation of prednisone or deflazacort at age 6 years (± 2) and continued use on a daily schedule.^{19,20,59,78,80} Reduction in dose is necessary if side-effects are unmanageable or intolerable. If this is unsuccessful, then further reduction or change to another dosing regimen is necessary before abandoning treatment altogether (figure 5). Close monitoring for side-effects is important, especially within the initial 6 months of treatment. ACE=angiotensin converting enzyme. ADHD=attention-deficit hyperactivity disorder. DEXA=dual-energy x-ray absorptiometry. DMD=Duchenne muscular dystrophy. GC=glucocorticoid. GERD=gastroesophageal reflux disease. NSAID=non-steroidal anti-inflammatory drug. *See part 2 of this Review (figure 1).

Table 2: Recommended monitoring and intervention for GC side-effects

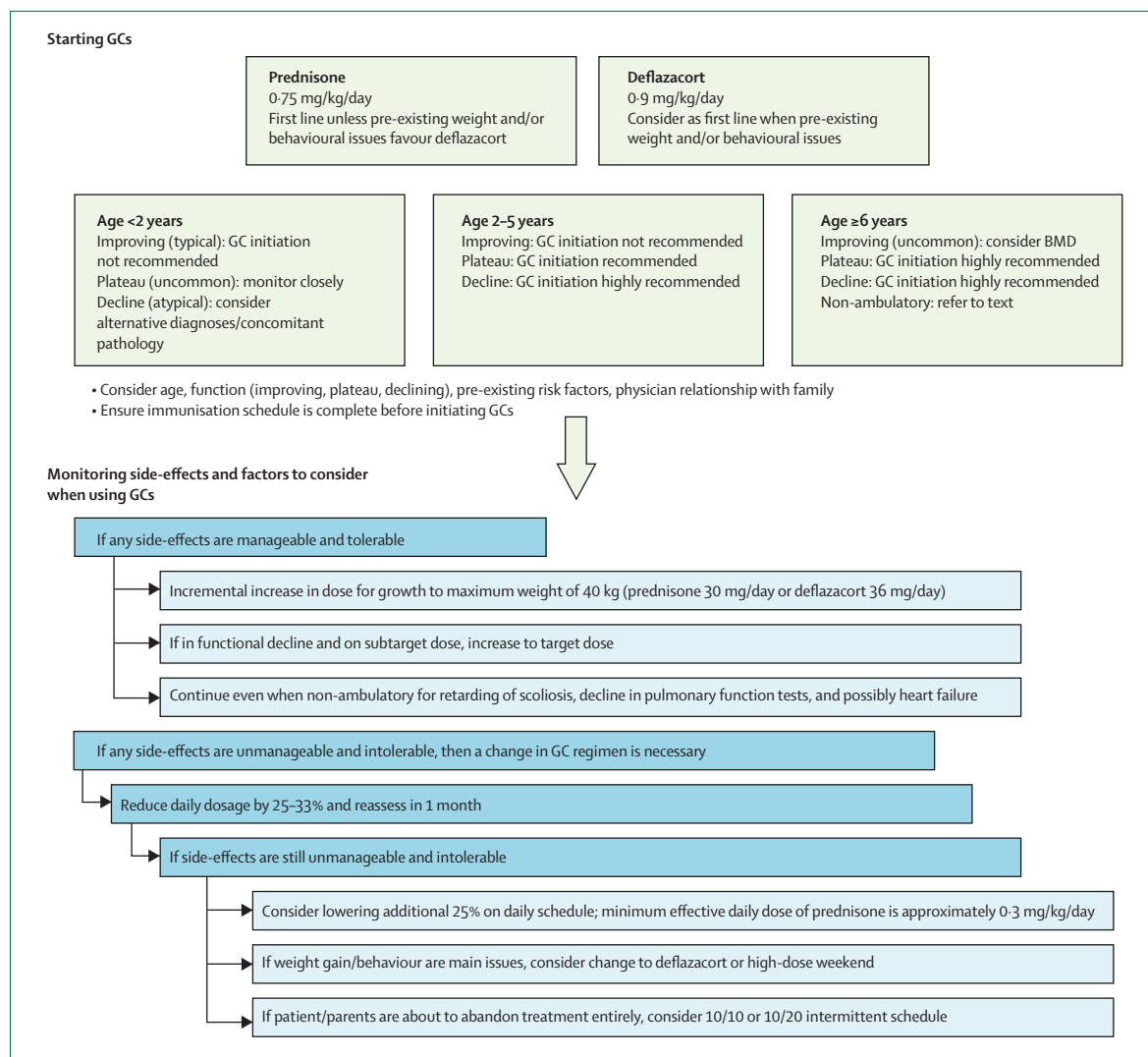


Figure 4: Schema for initiation and management of GC medication in Duchenne muscular dystrophy^{59,68,80}
 See table 2 for more on monitoring side-effects. BMD=Becker muscular dystrophy. GC=glucocorticoid.

Glucocorticoid regimens and dosing

The conclusion derived through the RAM process was that daily use of a glucocorticoid is preferred to alternative regimens (ie, alternate day, high-dose weekend, or a 10-day “on” cycling with 10 or 20 days “off”; table 3). Newer data from continuing and future studies might lead to modifications in this recommendation.⁸²

Prednisone (prednisolone) and deflazacort are believed to work similarly and neither one has a clearly superior effect on altering the decline in motor, respiratory, or cardiac function in DMD.^{19,20,59} The choice of which glucocorticoid to use depends on legal availability, cost, formulation, and perceived side-effect profiles (figure 4).^{19,20,59} Prednisone is inexpensive and available in a tablet and liquid formulation. Deflazacort, where available, is more expensive and available in fewer tablet sizes, and the liquid formulation is not widely available. Deflazacort

might be preferred to prednisone for some patients because of the likely lower risk of weight gain.^{19,20,59,68,70,83}

The recommended starting dose for prednisone in ambulatory boys is 0.75 mg/kg daily and for deflazacort is 0.9 mg/kg daily, given in the morning.^{19,20,59} Some patients experience transient behavioural issues (eg, hyperactivity, emotional lability) for a few hours after the medication is given. For these children, administration of the medication in the afternoon following school might be preferred. In general, higher doses of glucocorticoid are no more effective. The minimum effective dose that shows some benefit (albeit not to the maximum extent possible) is believed to be 0.3 mg/kg daily for prednisone.^{20,64} On the basis of the usual doses used in those who have continued use of steroids from the ambulatory phase, 0.3–0.6 mg/kg daily might be an option. There are no data or a panel consensus on the

	Prednisone dose*	Deflazacort dose*	Comments	In case of side-effects
Alternate day	0.75–1.25 mg/kg every other day	2 mg/kg every other day	Less effective but consider when a daily schedule has side-effects that are not effectively managed or tolerated	Must reduce dose if side-effects are not manageable or tolerable
High-dose weekend	5 mg/kg given each Friday and Saturday	Not yet tested	Less data on effectiveness as compared to a daily schedule. Consider as an alternative to daily treatment, especially if weight gain and behavioural issues are problematic	Must reduce dose if side-effects are not manageable or tolerable
Intermittent	0.75 mg/kg for 10 days alternating with 10–20 days off medication	0.6 mg/kg on days 1–20 and none for the remainder of the month	Less effective but has fewer side-effects. Consider as the least effective but possibly best tolerated regimen before abandoning steroid treatment altogether	Must reduce dose if side-effects are not manageable or tolerable

GC=glucocorticoid. *No set dose ranges have been clearly accepted as optimum.

Table 3: Alternative GC dosing strategies

optimum dose of glucocorticoid medication for non-ambulatory steroid-naïve patients.

For ambulatory patients, the dose of glucocorticoid is commonly increased as the child grows, provided side-effects are manageable and tolerable,⁸² until he reaches approximately 40 kg in weight, with a prednisone cap of approximately 30–40 mg/day (Clinical Investigators in Duchenne Dystrophy study group dose cap was 40 mg; Pandya S, unpublished) and a deflazacort cap of 36–39 mg/day.⁶² Non-ambulatory teenagers maintained on chronic glucocorticoid therapy are usually above 40 kg bodyweight and the dose per kilogram is often allowed to drift down to the 0.3–0.6 mg/kg daily range for prednisone or deflazacort, which still leads to substantial benefit.^{61,62} An alternative approach is to not increase the dose of glucocorticoids as the child grows, maintaining the initial dose. How this compares in effectiveness or side-effect profile to the majority view of increasing the dose with growth is not known.

For patients on a relatively low dose of glucocorticoids (less than the starting dose per kg bodyweight) and showing functional decline, the panel felt that it is necessary to consider a functional-rescue adjustment. The dose of glucocorticoids is increased to the target dose and the patient is then re-assessed for benefit and tolerability in 2–3 months. It might also be reasonable to increase the dose in an individual patient beyond the typical target dose in this setting to see whether a boost in strength might prolong ambulation, but there are no data or consensus opinion to support this position at present. However, an increase in glucocorticoid dose might also increase the risk of side-effects and this needs to be taken into consideration.

Side-effect management

Attentive management of steroid-related side-effects is crucial once a child has started chronic steroid therapy. Although steroid therapy is currently the mainstay of medication for DMD, it should not be undertaken casually by the health-care provider or family and should be managed in clinics with appropriate expertise. Setting parameters for the management of the growing child

with DMD on chronic glucocorticoid therapy can help to determine the frequency of dosing and dose adjustment (figure 4). Table 2 summarises the main side-effects to be monitored and useful interventions to counteract them.

Maintenance of a daily schedule is appropriate when the child's motor function is stable or in decline and if any glucocorticoid side-effects are manageable and tolerable. If a daily-dosing schedule generates unmanageable and/or intolerable side-effects that are not ameliorated by a reduction in dose at least once, then it is appropriate to change to an alternative regimen (table 3). If, however, any glucocorticoid side-effects are unmanageable and/or not tolerable, then an increase in glucocorticoid dose for growth or declining function is inappropriate, and in fact, a decrease in dose is necessary, whether motor function is stable or in decline. This applies to all dosing regimens. A reduction of approximately 25–33% is suggested, with a reassessment by phone or clinical visit in 1 month to determine whether side-effects have been controlled. If obesity is of concern, then the physician should consider switching treatment from prednisone to deflazacort (table 2). Glucocorticoid therapy should not be abandoned even if side-effects are not manageable and/or tolerable until at least one dose reduction and change to an alternative regimen has been pursued. This recommendation holds for both ambulatory and non-ambulatory patients. However, should adjustments to the glucocorticoid dosing and/or schedule regimens prove ineffective in making any significant side-effects sufficiently manageable and tolerable, then it is necessary to discontinue glucocorticoid therapy, irrespective of the state of motor function. These decisions need to be made individually in partnership with the child and family, because tolerability of side-effects compared to perceived benefit is an individual judgment. Figure 4 and table 2 provide more details on specific issues and management recommendations.

Other drugs and dietary supplements

The use of oxandrolone, an anabolic steroid, was not considered necessary or appropriate, either with or without glucocorticoid therapy. The safety of botulinum toxin A has not been studied for the treatment or prevention of

contractures in individuals with DMD and is thought to be inappropriate. No recommendations for the use of creatine were established. An RCT of creatine in DMD failed to show a clear benefit.⁸⁴ If a patient is taking creatine and has evidence of renal dysfunction, it is necessary to discontinue this supplement.

Supplements, such as coenzyme Q10, carnitine, aminoacids (glutamine, arginine), anti-inflammatories/anti-oxidants (fish oil, vitamin E, green-tea extract), and others, are being used by some parents and are endorsed by some practitioners. In the absence of supportive data from the literature or expert opinion consensus from these panels, we make no recommendations for the use of supplements. The expert panels also did not rate the value of potential disease-modifying drugs, such as pentoxifylline or various herbal or botanical agents. This was identified as an area for which additional research is needed. Active

involvement of families in activities that help with the advancement of knowledge about DMD, such as patient registries and clinical trials, was encouraged.

Psychosocial management

The medical care of a patient who has DMD and his family is not complete without support for their psychosocial wellbeing.^{85,86} For many parents, the stress caused by the psychosocial problems of their child exceeds the stress associated with the physical aspects of the disease.⁸⁷ Needs vary with the age of the patient and stage of disease (figure 2), but several general statements are valid.

DMD is a multilevel/multisystem disease. Biological factors (including the lack of dystrophin and/or its isoforms and the subsequent effect on brain development and functioning),⁸⁸ social and emotional factors, and treatment factors (eg, glucocorticoids) can all play a part in psychosocial health.⁵ Although most psychosocial issues are not unique to DMD, patients with DMD are at increased risk for problems in these areas. The psychosocial difficulties that are observed in DMD should be treated with the same effective, evidence-based interventions that are used in the general population,⁸⁹ with a strong emphasis on prevention and early intervention, because this will maximise potential outcome.

In general, psychosocial adjustment of boys with DMD is similar to that for other chronic medical conditions.⁹⁰ However, some specific areas of risk are of particular concern. Difficulties in social functioning might be due to biologically based deficits in specific cognitive skills, such as social reciprocity, social judgment, perspective taking, and affective discrimination, whereas the consequences of DMD (ie, physical limitations) might result in social isolation, social withdrawal, and reduced access to social activities. The pattern of speech and language deficits, including those in language development, short-term verbal memory, and phonological processing, as well as cognitive delays, including impaired intelligence and specific learning disorders, are well documented.^{91–94} There is also increased risk for neurobehavioural and neurodevelopmental disorders, including autism spectrum disorders, attention-deficit hyperactivity disorder, and obsessive-compulsive disorder.⁹⁵ Problems might be encountered with emotional adjustment and depression.⁵ Anxiety might also be an issue and can be exacerbated by cognitive deficits in mental flexibility and adaptability (ie, overly-rigid thought processes). Similarly, deficits in mental flexibility and emotional regulation can result in oppositional/argumentative behaviour and explosive temper problems. Increased rates of depression in parents of children who have DMD underscore the need for assessment and support of the entire family.⁹⁶

Assessments

Crucial times to consider assessments include the time around diagnosis (for some families, a 6–12-month window will be needed for some assessments to allow for

Panel 1: Psychosocial assessments

Emotional adjustment/coping

- Brief screening of emotional status is strongly recommended at every clinic visit or on an annual basis at a minimum
- Emotional adjustment screening can be informal in nature and does not require a comprehensive assessment
- Use of short standardised rating scales is appropriate and might be helpful
- Could be completed by a social worker or mental health professional or by other clinical staff with sufficient training in this area (eg, attending physician, nurse)

Neurocognitive

- Comprehensive developmental (children ≤ 4 years old) or neuropsychological (children ≥ 5 years old) assessment is recommended at or near time of diagnosis and prior to entering formal schooling
- Standardised performance-based tests and parent/patient rating scales should be used
- Should be done by a neuropsychologist or other professional with expertise in brain functioning and development within the context of medical conditions

Speech and language

Assessment for speech and language therapy services is necessary for:

- Younger children who present with suspected delays in speech and/or language development (as identified by caregiver or because of professional concerns)
- Older patients who present with loss or impairment of functional communication ability

Autism spectrum disorders

- Screening is necessary in children with DMD who are suspected of having language delays, restricted or repetitive behaviour patterns, or deficits in social functioning (as identified by caregiver or because of professional concerns)
- Necessary to refer to an experienced professional for comprehensive assessment and management of an autism spectrum disorder following positive screening or if ongoing concerns exist

Social work

- Assessment of the caregivers and family by a social-services professional is necessary
- A social services professional is defined as a clinical social worker or other professional who is sufficiently trained and qualified to assess and address emotional adjustment and coping, who has access to financial resources and programmes and social support networks, and who has an understanding/awareness of DMD

DMD=Duchenne muscular dystrophy.

adjustment after diagnosis), before entering school, and after a change in function. Although not every clinic will have direct access to all assessments and interventions listed (panels 1 and 2), we hope that these recommendations can serve as a guide to filling gaps in clinical staff and directing referrals, where appropriate. Assessments are targeted at the areas of emotional adjustment and coping, neurocognitive functioning, speech and language development, the possible presence of autism spectrum disorders, and social support. Routine screening of psychosocial wellbeing in the patient, parents, and siblings is necessary.

Interventions

Interventions will depend on the individual, but should be available to meet a broad spectrum of needs. Of crucial importance to patient/family psychosocial health is the designation of a care coordinator who can serve as a point of contact for families and who has sufficient knowledge and background in neuromuscular disorders to be able to meet the family's information needs.⁸⁶ Proactive intervention to help families and patients avoid the social problems and social isolation that occur in the context of DMD is necessary (panel 2).

Development of an individual education plan for all children with DMD in collaboration with their parents and schools is necessary to address potential learning problems. In addition, this will help with modification of activities that might otherwise prove harmful to the child's muscles (eg, physical education) or might lead to reduced energy/fatigue (eg, walking long distances to and from lunch) or safety (eg, playground activities) and accessibility issues. Promoting patient independence and involvement in decision making (ie, as it relates to their medical care) is also necessary.

Psychopharmacological interventions should be considered for the treatment of moderate to severe psychiatric symptoms as part of a multimodal treatment plan that includes appropriate psychotherapies and educational interventions. Standard prescribing practices and guidelines apply, with additional considerations focused on the patient's cardiac status and drug interactions and side-effects when combined with other medications (eg, weight gain and glucocorticoids), and the patient's general medical condition. Close monitoring with systematic, routine follow-up is highly recommended, including consultation with the appropriate specialist if concerns arise.

Palliative care is appropriate to relieve or prevent suffering and to improve quality of life in patients who have DMD, as needed. In addition to pain management, palliative care teams might also be able to provide emotional and spiritual support, assist families in clarifying treatment goals and making difficult medical decisions, facilitate communication between families and medical teams, and address issues related to grief, loss, and bereavement.

Panel 2: Psychosocial interventions

Psychotherapy

- Parental management training: recommended for externalising behaviours (eg, noncompliance/disruptive behaviour and parent-child conflict)
- Individual therapy: recommended for internalising behaviours (eg, low self-esteem and depression, anxiety, and obsessive-compulsive disorder, adjustment and coping difficulties)
- Group therapy: recommended for social skills deficits
- Family therapy: recommended for adjustment and coping difficulties and parent-child conflict
- Applied behaviour analysis: recommended for specific behaviours related to autism

Pharmacological interventions

- Selective serotonin re-uptake inhibitors for depression, anxiety, obsessive-compulsive disorder
- Mood stabilisers for aggression, anger/emotional dysregulation
- Stimulants for attention-deficit hyperactivity disorder

Social interaction interventions

- Increasing DMD awareness and knowledge among school personnel
- Peer education about DMD
- Social skills training (as needed to address deficits in this area)
- Modified/adapted sports, summer camps, and youth groups/programmes
- Art groups, equestrian, and aqua therapies, use of service dogs, nature programmes, and internet/chat rooms, among others
- Promoting patient independence and self-advocacy

Educational interventions

- Neuropsychological assessment at diagnosis and before entering school
- Individualised education programme on entering school
- Measures to address deficits as they are identified

Care/support interventions

- Care coordinator: serves as a point of contact for the family to meet family information needs, schedule and coordinate appointments, and facilitate communication with clinicians, etc; should be a professional with a sufficient level of training regarding clinical care for DMD
- Home health-care services: should be used if a patient's health is at risk because sufficient care cannot be provided in their current setting or circumstances; might also be appropriate in other situations when the current care providers cannot sufficiently meet the patient's care needs
- Transition planning: encouraging self-advocacy in medical care, facilitating transfer to a new medical care team, and developing educational and vocational opportunities
- Palliative care: appropriate for pain management, as needed; emotional and spiritual support; and guidance for treatment and medical decisions
- Hospice care: necessary for end-stage patients

DMD=Duchenne muscular dystrophy.

Conclusions

The recommendations presented in the two parts of this Review represent the outcome of an international collaboration of clinical experts working to inform optimum care for DMD. Because of a paucity of data from RCTs for DMD (a common situation in rare disorders), a well-established method was chosen to generate statements about the appropriateness or

Search strategy and selection criteria

Peer-reviewed literature was searched using the key search terms of "Duchenne" or "muscular dystrophy", or both, paired with one of 410 other search terms related to a comprehensive list of assessment tools and interventions used in DMD management. The full list of search terms is available on request. The databases used included Medline, Embase, Web of Science, and the Cochrane Library. Initial inclusion criteria consisted of available abstracts of human studies published in English between 1986 and 2006. Each working group also incorporated major articles from its discipline published before 1986 and from 2007 to mid-2009 in the process of discussions, final assessments, and write-up of recommendations.

inappropriateness and necessity of clinical interventions. RAM offers several benefits compared with other consensus-based methods, including evidence-based generation of the questions to be addressed, independent appraisal of the options followed by group discussion, and several rounds of iteration.³⁵ A further advantage was the systematic evaluation of distinct clinical scenarios, mimicking as much as possible the clinical decision-making process in all its complexity.

This first part of the care recommendations generated by use of this method emphasises the overall ethos of multidisciplinary care for DMD and goes on to discuss the detail of diagnosis, pharmacological, and psychosocial management. Precise genetic diagnosis is now the gold standard for diagnosis of DMD, and here we recommend that it should be actively sought in all cases. The future possibility of mutation-specific therapies (currently in phase 1 and 2 clinical trials) adds a further urgency to the need for this kind of technology to be universally available.⁴¹ As genetic technologies change, in particular with the development of high-throughput diagnostics, this algorithm should become more straightforward.

The pharmacological mainstay of neuromuscular management in DMD is the use of glucocorticoids. Data from RCTs support their use,¹⁹ although treatment regimens are highly variable across different countries and different clinics. Further trials of glucocorticoids and management of their side-effects are likely to augment our knowledge of their optimum use.^{60,82} In the meantime, these guidelines provide a framework for glucocorticoid use that allows greater consistency—a point that is of importance not only for current patient care, but in the context of the planning of multicentre trials of other novel therapies, which are allowing the baseline use of steroids as part of the standard of care.

Despite many studies reporting that both behavioural and learning issues are important for patients with DMD and their families, few publications have provided pragmatic guidelines on psychosocial care in this condition. Providing support for these kinds of issues is

frequently a challenge within a medically orientated care structure, but these recommendations clearly put this element of care at the centre of management, with an emphasis on anticipatory interventions, and suggest that measurement of impact on these areas will be a significant challenge as the field moves towards clinical trials.

In the second part of this Review,³⁴ the discussion focuses on the role of rehabilitation, cardiovascular, gastroenterology/nutrition, orthopaedic/surgical, and respiratory specialties in DMD, so that together the two Reviews can provide a comprehensive and current guide to management in this condition.

Contributors

All authors provided intellectual expertise in the study design, generation and interpretation of data, writing of the Review, and the decision to publish. KB, aided by RF, drafted and edited the Review, and approved the final version. DJB, LEC, LC, SP, and CC were involved in the literature search.

DMD Care Considerations Working Group (CCWG) steering committee

T Abresch, C McDonald (University of California, Davis, CA, USA); L E Case (Duke University, Durham, NC, USA); D Atkins, K Siegel (US Agency for Healthcare Research and Quality, Rockville, MD, USA); L Cripe, B Wong (Cincinnati Children's Hospital Medical Center, Cincinnati, OH, USA); V Cwik (Muscular Dystrophy Association, Tucson, AZ, USA); J Finder (Children's Hospital of Pittsburgh, Pittsburgh, PA, USA); P Furlong (Parent Project Muscular Dystrophy, Fort Lee, NJ, USA); A Kenneson, A Vatave, C Constantin (CDC National Center on Birth Defects and Developmental Disabilities, Atlanta, GA, USA); S Pandya (University of Rochester, Rochester, NY, USA); J Porter (National Institute of Neurological Disorders and Stroke, US National Institutes of Health, Bethesda, MD, USA); M Sussman (Shriners' Hospital for Children, Portland, OR, USA).

DMD-CCWG publication committee

K Bushby (managing editor; Newcastle University, Newcastle upon Tyne, UK), all expert panel chairs (see below), and the following members of the steering committee: T Abresch, C Constantin, V Cwik, J Finder, P Furlong, J Porter, K Siegel, M Sussman, B Wong.

DMD-CCWG expert panel members

Cardiovascular management—L Cripe (chair); J Towbin (Cincinnati Children's Hospital Medical Center, Cincinnati, OH, USA); J Bourke (Newcastle University, UK); D Connuck (Janet Weis Children's Hospital, Danville, PA, USA); E Goldmuntz (Children's Hospital of Philadelphia, Philadelphia, PA, USA); L Markham (Vanderbilt University, Nashville, TN, USA); K D Mathews (University of Iowa Children's Hospital, Iowa City, IA, USA); E McNally (University of Chicago, Chicago, IL, USA); R Moxley (University of Rochester, Rochester, NY, USA); R Williams (University of Utah, Salt Lake City, UT, USA).

Diagnostics—P R Clemens (chair; University of Pittsburgh and the Department of Veteran Affairs Medical Center, Pittsburgh, PA, USA); A M Connolly (Washington University School of Medicine, St Louis, MO, USA); C Cunniff (University of Arizona College of Medicine, Tucson/Phoenix, AZ, USA); K Dent, K Flanigan (University of Utah, Salt Lake City, UT, USA); E Hoffman (Children's National Medical Center, Washington, DC, USA); S Iannaccone (University of Texas Southwestern Medical Center, Dallas, TX, USA); N Johnson (Johns Hopkins School of Medicine, Baltimore, MD, USA); T Miller (University of Arizona Health Sciences Center, Tucson/Phoenix, AZ, USA); T Sejersen (Karolinska Institute, Stockholm, Sweden).

Gastrointestinal and nutritional management—A Kaul (co-chair); J Tomezsko (co-chair [retired]); Children's Hospital of Philadelphia, Philadelphia, PA, USA); S Casey (Seattle Children's Hospital, Seattle, WA, USA); N Goemans (University Hospital Leuven, Leuven, Belgium); A Gulyas, K Swan (University of Medicine and Dentistry of New Jersey, Newark, NJ, USA); K Larson (Gillette Children's Specialty Healthcare, St Paul, MN, USA); H Lipner (Hackensack University Medical Center, Hackensack, NJ, USA); M Mascarenhas (Children's Hospital of

Philadelphia, Philadelphia, PA, USA); K Rao (Cincinnati Children's Hospital Medical Center, Cincinnati, OH, USA).
Neuromuscular management—R Finkel (chair); C Bonnemenn (Children's Hospital of Philadelphia, Philadelphia, PA, USA); D Biggar (Bloorview Kids Rehab, Toronto, Canada); K Bushby (Newcastle University, Newcastle upon Tyne, UK); D Escolar (formerly with Children's National Medical Center, Washington, DC, USA); E W Massey (Duke University School of Medicine, Durham, NC, USA); T Miller (University of Arizona Health Sciences Center, Tucson/Phoenix, AZ, USA); J Pascual (University of Texas Southwestern Medical Center, Dallas, TX, USA); J Sladky (Emory University, Atlanta, GA, USA); K Wagner (Johns Hopkins Hospital, Baltimore, MD, USA); B Wong (Cincinnati Children's Hospital Medical Center, Cincinnati, OH, USA).
Orthopaedic and surgical management—F Shapiro (chair; Children's Hospital Boston, Boston, MA, USA); B Alman (Hospital for Sick Children, Toronto, Canada); J Bach, A Patel (University of Medicine and Dentistry of New Jersey, Newark, NJ, USA); D J Birkkrant (MetroHealth Medical Center/Case Western Reserve University, Cleveland, OH, USA); T Do, N Weidner (Cincinnati Children's Hospital Medical Center, Cincinnati, OH, USA); W Mackenzie (Jefferson Medical College, Thomas Jefferson University, Philadelphia, PA, USA); C McDonald (University of California, Davis, CA, USA); H Saraste (Karolinska Institute, Stockholm, Sweden); M Sussman (Shriners' Hospital for Children, Portland, OR, USA); E Vroom (Algra and Vroom Orthodontics Practice, Purmerend, Netherlands).
Psychosocial management—K Kinnett (co-chair); J Poysky (co-chair), S Moreland (Baylor College of Medicine, Houston, TX, USA); S Cotton (University of Melbourne, Melbourne, Australia); J Hendriksen (Maastricht University Hospital, Maastricht, Netherlands); V Hinton (Columbia University, New York, NY, USA); J Kiefel (Children's Healthcare of Atlanta, Atlanta, GA, USA); K McGuire (Muscular Dystrophy Association, Tucson, AZ, USA); M Ritzo (Children's National Medical Center, Washington, DC, USA); C Trout (University of Iowa Children's Hospital, Iowa City, IA, USA); N Weidner (Cincinnati Children's Hospital Medical Center, Cincinnati, OH, USA).
Rehabilitation management—L E Case (co-chair; Duke University, Durham, NC, USA); C McDonald (co-chair; University of California, Davis, CA, USA); S Pandya (co-chair; University of Rochester, Rochester, NY, USA); G Carter (University of Washington School of Medicine, Seattle, WA, USA); C Cronin, A Gulyas (University of Medicine and Dentistry of New Jersey, Newark, NJ, USA); M Eagle (Newcastle University, Newcastle upon Tyne, UK); J Engel (University of Washington, Seattle, WA, USA); S Evans (Children's National Medical Center, Washington, DC, USA); H Lipner (Hackensack University Medical Center, Hackensack, NJ, USA); D Matthews (University of Colorado School of Medicine, Denver, CO, USA); L Morrison (University of New Mexico School of Medicine, Albuquerque, NM, USA); H Posselt (Montrose Access, Corinda, QLD, Australia); P Ryan, J Smith (New York Presbyterian Hospital, New York, NY, USA); N Strauss (Columbia University Medical Center, New York, NY, USA); C Trout (University of Iowa Children's Hospital, Iowa City, IA, USA); A Wright (Carolinas Neuromuscular/ALS-MDA Center, Charlotte, NC, USA).
Respiratory management—D J Birkkrant (chair; MetroHealth Medical Center, Case Western Reserve University, Cleveland, OH, USA); R Amin (Cincinnati Children's Hospital Medical Center, Cincinnati, OH, USA); J Bach (University of Medicine and Dentistry of New Jersey, Newark, NJ, USA); J Benditt (University of Washington School of Medicine, Seattle, WA, USA); M Eagle (Newcastle University, Newcastle upon Tyne, UK); J Finder (Children's Hospital of Pittsburgh, Pittsburgh, PA, USA); J T Kissel (Ohio State University Medical Center, Columbus, OH, USA); A Koumbourlis (Children's National Medical Center, Albert Einstein College of Medicine, Bronx, NY, USA); R M Kravitz (Duke University, Durham, NC, USA).

Conflicts of interest

KB is a consultant for Acceleron, AVI, Debiopharm, Prosensa, and Santhera. LEC has received honoraria from Genzyme Corporation, has participated in research supported by Genzyme Corporation, PTC Therapeutics, the Leal Foundation, and Families of Spinal Muscular Atrophy, has been awarded grant support from the National Skeletal Muscle Research Center, and is a member of the Pompe Registry Board of Advisors. All other authors have no conflicts of interest.

Acknowledgments

We thank P Eubanks, A Kenneson, A Vatave (CDC); A Cyrus and E Levy (Oak Ridge Institute for Science and Education); B Bradshaw, H Desai, P Haskell, E Hunt, A Marsden, C Muse, and L Yuson (Booz/Allen/Hamilton); and B Tseng (Massachusetts General Hospital, Harvard Medical School) for their contributions to this study and manuscript. We also thank the following organisations for their collaboration on this study: Muscular Dystrophy Association, National Institute on Disability and Rehabilitation Research, Parent Project Muscular Dystrophy, and TREAT-NMD (EC036825). In addition, we thank M Levine, M Mascarenhas, and M Thayu (Children's Hospital of Philadelphia) for their participation in discussions about bone health; and G Carter, J Engel (University of Washington), H Posselt (Montrose Access, Australia), and C Trout (University of Iowa Children's Hospital) for their advice on pain management. The CDC provided support for the project through funding, study design, collection, analysis, and interpretation of data and manuscript preparation. The findings and conclusions in this report are those of the authors and do not necessarily represent the official position of the CDC.

References

- 1 Drousiotou A, Ioannou P, Georgiou T, et al. Neonatal screening for Duchenne muscular dystrophy: a novel semiquantitative application of the bioluminescence test for creatine kinase in a pilot national program in Cyprus. *Genet Test* 1998; **2**: 55–60.
- 2 Bradley D, Parsons E. Newborn screening for Duchenne muscular dystrophy. *Semin Neonatol* 1998; **3**: 27–34.
- 3 Emery AE. Population frequencies of inherited neuromuscular diseases—a world survey. *Neuromuscul Disord* 1991; **1**: 19–29.
- 4 Bushby KM, Hill A, Steele JG. Failure of early diagnosis in symptomatic Duchenne muscular dystrophy. *Lancet* 1999; **353**: 55–78.
- 5 Poysky J, Behavior in DMD Study Group. Behavior patterns in Duchenne muscular dystrophy: report on the Parent Project Muscular Dystrophy behavior workshop 8–9 of December 2006, Philadelphia, USA. *Neuromuscul Disord* 2007; **17**: 986–94.
- 6 Hoffman EP, Brown RH Jr, Kunkel LM. Dystrophin: the protein product of the Duchenne muscular dystrophy locus. *Cell* 1987; **51**: 919–28.
- 7 Nicholson LV, Johnson MA, Bushby KM, Gardner-Medwin D, Curtis A, Ginjaar IB. Integrated study of 100 patients with Xp21 linked muscular dystrophy using clinical, genetic, immunochemical, and histopathological data. Part 1. Trends across the clinical groups. *J Med Genet* 1993; **30**: 728–36.
- 8 Nicholson LV, Johnson MA, Bushby KM, Gardner-Medwin D, Curtis A, Ginjaar IB. Integrated study of 100 patients with Xp21 linked muscular dystrophy using clinical, genetic, immunochemical, and histopathological data. Part 2. Correlations within individual patients. *J Med Genet* 1993; **30**: 737–44.
- 9 Nicholson LV, Johnson MA, Bushby KM, Gardner-Medwin D, Curtis A, Ginjaar IB. Integrated study of 100 patients with Xp21 linked muscular dystrophy using clinical, genetic, immunochemical, and histopathological data. Part 3. Differential diagnosis and prognosis. *J Med Genet* 1993; **30**: 745–51.
- 10 Towbin JA. The role of cytoskeletal proteins in cardiomyopathies. *Curr Opin Cell Biol* 1998; **10**: 131–39.
- 11 Towbin JA, Bowles NE. Molecular genetics of left ventricular dysfunction. *Curr Mol Med* 2001; **1**: 81–90.
- 12 Muntoni F, Torelli S, Ferlini A. Dystrophin and mutations: one gene, several proteins, multiple phenotypes. *Lancet Neurol* 2003; **2**: 731–40.
- 13 Bushby KM, Goodship JA, Nicholson LV, et al. Variability in clinical, genetic and protein abnormalities in manifesting carriers of Duchenne and Becker muscular dystrophy. *Neuromuscul Disord* 1993; **3**: 57–64.
- 14 Richards CS, Watkins SC, Hoffman EP, et al. Skewed X inactivation in a female MZ twin results in Duchenne muscular dystrophy. *Am J Hum Genet* 1990; **46**: 672–81.
- 15 Hoffman EP, Arahata K, Minetti C, Bonilla E, Rowland LP. Dystrophinopathy in isolated cases of myopathy in females. *Neurology* 1992; **42**: 967–75.
- 16 Koenig M, Hoffman EP, Bertelson CJ, Monaco AP, Feener C, Kunkel LM. Complete cloning of the Duchenne muscular dystrophy (DMD) cDNA and preliminary genomic organization of the DMD gene in normal and affected individuals. *Cell* 1987; **50**: 509–17.

- 17 Kunkel LM, Monaco AP, Hoffman E, Koenig M, Feener C, Bertelson C. Molecular studies of progressive muscular dystrophy (Duchenne). *Enzyme* 1987; **38**: 72–75.
- 18 Muntoni F, Wells D. Genetic treatments in muscular dystrophies. *Curr Opin Neurol* 2007; **20**: 590–94.
- 19 Manzur AY, Kuntzer T, Pike M, Swan A. Glucocorticoid corticosteroids for Duchenne muscular dystrophy. *Cochrane Database Syst Rev* 2008; **1**: CD003725.
- 20 Moxley RT 3rd, Ashwal S, Pandya S, et al. Practice parameter: corticosteroid treatment of Duchenne dystrophy: report of the Quality Standards Subcommittee of the American Academy of Neurology and the Practice Committee of the Child Neurology Society. *Neurology* 2005; **64**: 13–20.
- 21 Jeppesen J, Green A, Steffensen BF, Rahbek J. The Duchenne muscular dystrophy population in Denmark, 1977–2001: prevalence, incidence and survival in relation to the introduction of ventilator use. *Neuromuscul Disord* 2003; **13**: 804–12.
- 22 Yasuma F, Konagaya M, Sakai M, Kuru S, Kawamura T. A new lease on life for patients with Duchenne muscular dystrophy in Japan. *Am J Med* 2004; **117**: 363.
- 23 Eagle M, Bourke J, Bullock R, et al. Managing Duchenne muscular dystrophy—the additive effect of spinal surgery and home nocturnal ventilation in improving survival. *Neuromuscul Disord* 2007; **17**: 470–75.
- 24 Eagle M. Report on the muscular dystrophy campaign workshop: exercise in neuromuscular diseases Newcastle, January 2002. *Neuromuscul Disord* 2002; **12**: 975–83.
- 25 Markham LW, Kinnett K, Wong BL, Woodrow Benson D, Cripe LH. Corticosteroid treatment retards development of ventricular dysfunction in Duchenne muscular dystrophy. *Neuromuscul Disord* 2008; **18**: 365–70.
- 26 American Academy of Pediatrics Section on Cardiology and Cardiac Surgery. Cardiovascular health supervision for individuals affected by Duchenne or Becker muscular dystrophy. *Pediatrics* 2005; **116**: 1569–73.
- 27 Bushby K, Muntoni F, Bourke JP. 107th ENMC International Workshop: the management of cardiac involvement in muscular dystrophy and myotonic dystrophy. 7th–9th June 2002, Naarden, the Netherlands. *Neuromuscul Disord* 2003; **13**: 166–72.
- 28 Duboc D, Meune C, Lerebours G, Devaux JY, Vaksmann G, Bécane HM. Effect of perindopril on the onset and progression of left ventricular dysfunction in Duchenne muscular dystrophy. *J Am Coll Cardiol* 2005; **45**: 855–57.
- 29 Brooke MH, Fenichel GM, Griggs RC, Mendell JR, Moxley RT, CIDD Group. Duchenne muscular dystrophy: patterns of clinical progression and effects of supportive therapy. *Neurology* 1989; **39**: 475–81.
- 30 Vignos PJ, Wagner MB, Karlinchak B, Katirji B. Evaluation of a program for long-term treatment of Duchenne muscular dystrophy. Experience at the University Hospitals of Cleveland. *J Bone Joint Surg Am* 1996; **78**: 1844–52.
- 31 Rahbek J, Werge B, Madsen A, Marquardt J, Steffensen BF, Jeppesen J. Adult life with Duchenne muscular dystrophy: observations among an emerging and unforeseen patient population. *Pediatr Rehabil* 2005; **8**: 17–28.
- 32 Tatara K, Shinno S. Management of mechanical ventilation and prognosis in duchenne muscular dystrophy. *IRYO Jap J Nail Med Serv* 2008; **62**: 566–71.
- 33 Parent Project Muscular Dystrophy. MD-CARE Act. http://www.parentprojectmd.org/site/PageServer?pagenam=ending_speakup_mdcareact (accessed Oct 7, 2009).
- 34 Bushby K, Finkel R, Birnkrant DJ, et al. Diagnosis and management of Duchenne muscular dystrophy, part 2: implemenetation of multidisciplinary care. *Lancet Neurol* 2009; published online Nov 30. DOI:10.1016/S1474-4422(09)70272-8.
- 35 Fitch K, Bernstein SJ, Aguilar MS, et al. The RAND/UCLA appropriateness method user's manual. Santa Monica, CA: RAND Corporation, 2001.
- 36 Parsons, EP, Clark AJ, Bradley DM. Developmental progress in Duchenne muscular dystrophy: lessons for earlier detection. *Eur J Paediatr Neurol* 2004; **8**: 145–53.
- 37 Prior TW, Bridgeman SJ. Experience and strategy for the molecular testing of Duchenne muscular dystrophy. *J Mol Diagn* 2005; **7**: 317–26.
- 38 Lalic T, Vossen RH, Coffa J, et al. Deletion and duplication screening in the DMD gene using MLPA. *Eur J Hum Genet* 2005; **13**: 1231–34.
- 39 Flanigan KM, von Niederhausern A, Dunn DM, Alder J, Mendell JR, Weiss RB. Rapid direct sequence analysis of the dystrophin gene. *Am J Hum Genet* 2003; **72**: 931–39.
- 40 Dent KM, Dunn DM, von Niederhausern AC, et al. Improved molecular diagnosis of dystrophinopathies in an unselected clinical cohort. *Am J Med Genet A* 2005; **134**: 295–98.
- 41 Lim LE, Rando TA. Technology insight: therapy for Duchenne muscular dystrophy—an opportunity for personalized medicine? *Nat Clin Pract Neurol* 2008; **4**: 149–58.
- 42 van Ommen GJ, van Deutekom J, Aartsma-Rus A. The therapeutic potential of antisense-mediated exon skipping. *Curr Opin Mol Ther* 2008; **10**: 140–49.
- 43 van Deutekom JC, Janson AA, Ginjaar IB, et al. Local dystrophin restoration with antisense oligonucleotide PRO051. *N Engl J Med* 2007; **357**: 2677–86.
- 44 Muntoni F. Is a muscle biopsy in Duchenne dystrophy really necessary? *Neurology* 2001; **57**: 574–75.
- 45 Lacomis D. The use of percutaneous needle muscle biopsy in the diagnosis of myopathy. *Curr Rheumatol Rep* 2000; **2**: 225–29.
- 46 Lacomis D. The utility of muscle biopsy. *Curr Neurol Neurosci Rep* 2004; **4**: 81–86.
- 47 Henriksson KG. Semi-open muscle biopsy technique. A simple outpatient procedure. *Acta Neurol Scand* 1979; **59**: 317–23.
- 48 Dorph C, Nennesmo I, Lundberg IE. Percutaneous conchotome muscle biopsy. A useful diagnostic and assessment tool. *J Rheumatol* 2001; **28**: 1591–99.
- 49 Beenakker EA, Maurits NM, Fock JM, Brouwer OF, van der Hoeven JH. Functional ability and muscle force in healthy children and ambulant Duchenne muscular dystrophy patients. *Eur J Paediatr Neurol* 2005; **9**: 387–93.
- 50 Florence JM, Pandya S, King WM, et al. Clinical trials in Duchenne dystrophy. Standardization and reliability of evaluation procedures. *Phys Ther* 1984; **64**: 41–45.
- 51 Pandya S, Florence JM, King WM, Robinson J, Signore LC, CIDD Group. Reliability of goniometric measurements in patients with Duchenne muscular dystrophy. *Phys Ther* 1985; **65**: 1339–42.
- 52 Brooke MH, Griggs RC, Mendell JR, Fenichel GM, Shumate JB, Pellegrino RJ. Clinical trial in Duchenne dystrophy. 1. The design of the protocol. *Muscle Nerve* 1981; **4**: 186–97.
- 53 Gorospe JR, Hoffman EP. Duchenne muscular dystrophy. *Curr Opin Rheumatol* 1992; **4**: 794–800.
- 54 Matsumura K, Ohlendieck K, Ionasescu VV, et al. The role of the dystrophin-glycoprotein complex in the molecular pathogenesis of muscular dystrophies. *Neuromuscul Disord* 1993; **3**: 533–35.
- 55 Johnson EW, Walter J. Zeiter Lecture: pathokinesiology of Duchenne muscular dystrophy: implications for management. *Arch Phys Med Rehabil* 1977; **58**: 4–7.
- 56 McDonald CM, Abresch RT, Carter GT, et al. Profiles of neuromuscular diseases. Duchenne muscular dystrophy. *Am J Phys Med Rehabil* 1995; **74** (suppl): S70–92.
- 57 Siegel IM. Pathomechanics of stance in Duchenne muscular dystrophy. *Arch Phys Med Rehabil* 1972; **53**: 403–06.
- 58 Sutherland DH, Olshen R, Cooper L, et al. The pathomechanics of gait in Duchenne muscular dystrophy. *Dev Med Child Neurol* 1981; **23**: 3–22.
- 59 Angelini C. The role of corticosteroids in muscular dystrophy: a critical appraisal. *Muscle Nerve* 2007; **36**: 424–35.
- 60 Bushby K, Muntoni F, Urtizberea A, Hughes R, Griggs R. Report on the 124th ENMC International Workshop. Treatment of Duchenne muscular dystrophy; defining the gold standards of management in the use of corticosteroids. 2–4 April 2004, Naarden, The Netherlands. *Neuromuscul Disord* 2004; **14**: 526–34.
- 61 King WM, Ruttencutter R, Nagaraja HN, et al. Orthopedic outcomes of long-term daily corticosteroid treatment in Duchenne muscular dystrophy. *Neurology* 2007; **68**: 1607–13.
- 62 Biggar WD, Harris VA, Eliasoph L, Alman B. Long-term benefits of deflazacort treatment for boys with Duchenne muscular dystrophy in their second decade. *Neuromuscul Disord* 2006; **16**: 249–55.
- 63 Houde S, Filiatrault M, Fournier A, et al. Deflazacort use in Duchenne muscular dystrophy: an 8-year follow-up. *Pediatr Neurol* 2008; **38**: 200–06.

- 64 Griggs RC, Moxley RT 3rd, Mendell JR, et al. Prednisone in Duchenne dystrophy. A randomized, controlled trial defining the time course and dose response. *Arch Neurol* 1991; **48**: 383–88.
- 65 Mendell JR, Moxley RT, Griggs RC, et al. Randomized, double-blind six-month trial of prednisone in Duchenne's muscular dystrophy. *N Engl J Med* 1989; **320**: 1592–97.
- 66 Fenichel GM, Mendell JR, Moxley RT, et al. A comparison of daily and alternate-day prednisone therapy in the treatment of Duchenne muscular dystrophy. *Arch Neurol* 1991; **48**: 575–79.
- 67 Mesa LE, Dubrovsky AL, Corderi J, Marco P, Flores D. Steroids in Duchenne muscular dystrophy—deflazacort trial. *Neuromuscul Disord* 1991; **1**: 261–66.
- 68 Biggar WD, Politano L, Harris VA, et al. Deflazacort in Duchenne muscular dystrophy: a comparison of two different protocols. *Neuromuscul Disord* 2004; **14**: 476–82.
- 69 Fenichel GM, Florence JM, Pestronk A, et al. Long-term benefit from prednisone therapy in Duchenne muscular dystrophy. *Neurology* 1991; **41**: 1874–77.
- 70 Bonifati MD, Ruzza G, Bonometto P, et al. A multicenter, double-blind, randomized trial of deflazacort versus prednisone in Duchenne muscular dystrophy. *Muscle Nerve* 2000; **23**: 1344–47.
- 71 American Academy of Pediatrics Committee, Kleinman RE, eds. Pediatric nutrition handbook (6th edn). Elk Grove Village, IL: American Academy of Pediatrics Press, 2009.
- 72 Daley-Yates PT, Richards DH. Relationship between systemic corticosteroid exposure and growth velocity: development and validation of a pharmacokinetic/pharmacodynamic model. *Clin Ther* 2004; **26**: 1905–19.
- 73 Foster BJ, Shults J, Zemel BS, Leonard MB. Interactions between growth and body composition in children treated with high-dose chronic glucocorticoids. *Am J Clin Nutr* 2004; **80**: 1334–41.
- 74 Stuart FA, Segal TY, Keady S. Adverse psychological effects of corticosteroids in children and adolescents. *Arch Dis Child* 2005; **90**: 500–06.
- 75 Bender BG, Ikle DN, DuHamel T, Tinkelman D. Neuropsychological and behavioral changes in asthmatic children treated with beclomethasone dipropionate versus theophylline. *Pediatrics* 1998; **101**: 355–60.
- 76 Balaban B, Matthews DJ, Clayton GH, Carry T. Corticosteroid treatment and functional improvement in Duchenne muscular dystrophy: long-term effect. *Am J Phys Med Rehabil* 2005; **84**: 843–50.
- 77 Mortimer KJ, Tata LJ, Smith CJ, et al. Oral and inhaled corticosteroids and adrenal insufficiency: a case-control study. *Thorax* 2006; **61**: 405–08.
- 78 Brunton LL, Lazo JS, Parker KL, eds. Goodman and Gilman's the pharmacological basis of therapeutics (11th edn). New York: McGraw-Hill Medical, 2005.
- 79 Brown JJ, Zacharin MR. Proposals for prevention and management of steroid-induced osteoporosis in children and adolescents. *J Paediatr Child Health* 2005; **41**: 553–57.
- 80 Garrood P, Eagle M, Jardine PE, Bushby K, Straub V. Myoglobinuria in boys with Duchenne muscular dystrophy on corticosteroid therapy. *Neuromuscul Disord* 2008; **18**: 71–73.
- 81 Brooke MH, Fenichel GM, Griggs RC, et al. Clinical investigation in Duchenne dystrophy: 2. Determination of the power of therapeutic trials based on the natural history. *Muscle Nerve* 1983; **6**: 91–103.
- 82 Bushby K, Griggs R, MSG/ENMC FOR DMD trial study group. 145th ENMC International Workshop: planning for an international trial of steroid dosage regimes in DMD (FOR DMD), 22–24th October 2006, Naarden, The Netherlands. *Neuromuscul Disord* 2007; **17**: 423–28.
- 83 Biggar WD, Gingras M, Fehlings DL, Harris VA, Steele CA. Deflazacort treatment of Duchenne muscular dystrophy. *J Pediatr* 2001; **138**: 45–50.
- 84 Escobar DM, Buyse G, Henricson E, et al. CINRG randomized controlled trial of creatine and glutamine in Duchenne muscular dystrophy. *Ann Neurol* 2005; **58**: 151–55.
- 85 Cyrulnik SE, Fee RJ, Batchelder A, Kiefel J, Goldstein E, Hinton VJ. Cognitive and adaptive deficits in young children with Duchenne muscular dystrophy (DMD). *J Int Neuropsychol Soc* 2008; **14**: 853–61.
- 86 Green JM, Murton FE. Diagnosis of Duchenne muscular dystrophy: parents' experiences and satisfaction. *Child Care Health Dev* 1996; **22**: 113–28.
- 87 Nereo NE, Fee RJ, Hinton VJ. Parental stress in mothers of boys with Duchenne muscular dystrophy. *J Pediatr Psychol* 2003; **28**: 473–84.
- 88 Anderson JL, Head SI, Rae C, Morley JW. Brain function in Duchenne muscular dystrophy. *Brain* 2002; **125**: 4–13.
- 89 Kazdin AE, Weisz JR. Evidence-based psychotherapies for children and adolescents. New York: Guilford Press, 2003.
- 90 Hendriksen JG, Poysky JT, Schrans DG, Schouten EG, Aldenkamp AP, Vles JS. Psychosocial adjustment in males with Duchenne muscular dystrophy: psychometric properties and clinical utility of a parent-report questionnaire. *J Pediatr Psychol* 2009; **34**: 69–78.
- 91 Hinton VJ, De Vivo DC, Nereo NE, Goldstein E, Stern Y. Selective deficits in verbal working memory associated with a known genetic etiology: the neuropsychological profile of Duchenne muscular dystrophy. *J Int Neuropsychol Soc* 2001; **7**: 45–54.
- 92 Cyrulnik SE, Fee RJ, De Vivo DC, Goldstein E, Hinton VJ. Delayed developmental language milestones in children with Duchenne's muscular dystrophy. *J Pediatr* 2007; **150**: 474–78.
- 93 Cotton SM, Voudouris NJ, Greenwood KM. Association between intellectual functioning and age in children and young adults with Duchenne muscular dystrophy: further results from a meta-analysis. *Dev Med Child Neurol* 2005; **47**: 257–65.
- 94 Hendriksen JG, Vles JS. Are males with Duchenne muscular dystrophy at risk for reading disabilities? *Pediatr Neurol* 2006; **34**: 296–300.
- 95 Hendriksen JG, Vles JS. Neuropsychiatric disorders in males with Duchenne muscular dystrophy: frequency rate of attention-deficit hyperactivity disorder (ADHD), autism spectrum disorder, and obsessive-compulsive disorder. *J Child Neurol* 2008; **23**: 477–81.
- 96 Abi Daoud MS, Dooley JM, Gordon KE. Depression in parents of children with Duchenne muscular dystrophy. *Pediatr Neurol* 2004; **31**: 16–19.

Diagnosis and management of Duchenne muscular dystrophy, part 2: implementation of multidisciplinary care



Katharine Bushby, Richard Finkel, David J Birnkrant, Laura E Case, Paula R Clemens, Linda Cripe, Ajay Kaul, Kathi Kinnett, Craig McDonald, Shree Pandya, James Poysky, Frederic Shapiro, Jean Tomezsko, Carolyn Constantin, for the DMD Care Considerations Working Group*

Optimum management of Duchenne muscular dystrophy (DMD) requires a multidisciplinary approach that focuses on anticipatory and preventive measures as well as active interventions to address the primary and secondary aspects of the disorder. Implementing comprehensive management strategies can favourably alter the natural history of the disease and improve function, quality of life, and longevity. Standardised care can also facilitate planning for multicentre trials and help with the identification of areas in which care can be improved. Here, we present a comprehensive set of DMD care recommendations for management of rehabilitation, orthopaedic, respiratory, cardiovascular, gastroenterology/nutrition, and pain issues, as well as general surgical and emergency-room precautions. Together with part 1 of this Review, which focuses on diagnosis, pharmacological treatment, and psychosocial care, these recommendations allow diagnosis and management to occur in a coordinated multidisciplinary fashion.

Introduction

In part 1 of this Review, the importance of multidisciplinary care was underscored in the context of diagnosis and pharmacological and psychosocial management of Duchenne muscular dystrophy (DMD), emphasising that no one aspect of the care of this disease can be taken in isolation.¹ This model of care emphasises the value of multidisciplinary involvement to anticipate early changes in many systems and to manage the wide spectrum of complications that can be predicted in DMD. We applied this model of care to the patient and family across the different stages of the disease. The optimum delivery of care by rehabilitation, cardiovascular, gastroenterology/nutrition, orthopaedic/surgical, and respiratory specialties is presented in this second part of the Review. As before, the RAND Corporation–University of California Los Angeles Appropriateness Method was used² (full details of the methods are described in part 1 of this Review³).

Management of muscle extensibility and joint contractures

Decreased muscle extensibility and joint contractures in DMD occur as a result of various factors, including loss of ability to actively move a joint through its full range of motion, static positioning in a position of flexion, muscle imbalance about a joint, and fibrotic changes in muscle tissue.^{3–8} The maintenance of good ranges of movement and bilateral symmetry are important to allow optimum movement and functional positioning, to maintain ambulation, prevent development of fixed deformities, and maintain skin integrity.^{9–14}

The management of joint contractures requires input from neuromuscular specialists, physical therapists, rehabilitation physicians, and orthopaedic surgeons.^{15,16} Programmes to prevent contractures are usually monitored and implemented by a physical therapist and tailored to individual needs, stage of the disease, response to therapy, and tolerance. Local care needs to be augmented by guidance from a specialist every 4 months.

Physical therapy interventions

Stretching and positioning

Effective stretching of the musculotendinous unit requires a combination of interventions, including active stretching, active-assisted stretching, passive stretching, and prolonged elongation using positioning, splinting, orthoses, and standing devices.^{9,10,12,17–20} As standing and walking become more difficult, standing programmes are recommended.

Active, active-assisted, and/or passive stretching to prevent or minimise contractures should be done a minimum of 4–6 days per week for any specific joint or muscle group. Stretching should be done at home and/or school, as well as in the clinic.

During both the ambulatory and non-ambulatory phases, regular stretching at the ankle, knee, and hip is necessary. During the non-ambulatory phase, regular stretching of the upper extremities, including the long finger flexors and wrist, elbow, and shoulder joints, also becomes necessary. Additional areas that require stretching can be identified by individual examination.

Assistive devices for musculoskeletal management

Orthoses

Prevention of contractures also relies on resting orthoses, joint positioning, and standing programmes. Resting ankle–foot orthoses (AFOs) used at night can help to prevent or minimise progressive equinus contractures and are appropriate throughout life.^{6,17–19,21,22} AFOs should be custom-moulded and fabricated for comfort and optimum foot and ankle alignment. Knee–ankle–foot orthoses (KAFOs; eg, long leg braces or callipers) for prevention of contracture and deformity can be of value in the late ambulatory and early non-ambulatory stages to allow standing and limited ambulation for therapeutic purposes,²³ but might not be well tolerated at night.⁶ Use of AFOs during the daytime can be appropriate for full-time wheelchair users. Resting hand splints for patients with tight long finger flexors are appropriate.

Lancet Neurol 2010; 9: 177–89

Published Online

November 30, 2009

DOI:10.1016/S1474-

4422(09)70272-8

See *Lancet Neurol* 2010; 9: 77–93

*Members listed at end of part 1 of this Review

Institute of Human Genetics, Newcastle University, Newcastle upon Tyne, UK

(K Bushby MD); Division of

Neurology (R Finkel MD) and

Divisions of Pulmonary

Medicine and

Gastroenterology,

Hepatology, and Nutrition

(J Tomezsko PhD), Children's

Hospital of Philadelphia,

Philadelphia, PA, USA;

Division of Pediatric

Pulmonary Medicine,

MetroHealth Medical Center,

Case Western Reserve

University, Cleveland, OH, USA

(D J Birnkrant MD); Division of

Physical Therapy, Department

of Community and Family

Medicine, Duke University,

Durham, NC, USA

(L E Case DPT); Department of

Neurology, Molecular Genetics

and Biochemistry, University

of Pittsburgh, and

Department of Veteran Affairs

Medical Center, Pittsburgh,

PA, USA (P R Clemens MD);

Division of Cardiology

(L Cripe MD, K Kinnett MSN)

and Division of Pediatric

Gastroenterology,

Hepatology, and Nutrition

(A Kaul MD), Cincinnati

Children's Hospital Medical

Center, Cincinnati, OH, USA;

Department of Physical

Medicine and Rehabilitation,

University of California, Davis,

CA, USA (C McDonald MD);

Department of Neurology,

University of Rochester,

Rochester, NY, USA

(S Pandya PT); School of Allied

Health Sciences, Baylor

College of Medicine, Houston,

TX, USA (J Poysky PhD);

Department of Orthopaedic

Surgery, Children's Hospital

Boston, Boston, MA, USA

(F Shapiro MD); and National

Center on Birth Defects and Developmental Disabilities, Centers for Disease Control and Prevention, Atlanta, GA, USA (C Constantini PhD)

Correspondence to: Katharine Bushby, Newcastle University, Institute of Human Genetics, International Centre for Life, Centre Parkway, Newcastle upon Tyne NE1 3BZ, UK

kate.bushby@newcastle.ac.uk

Standing devices

A passive standing device for patients with either no or mild hip, knee, or ankle contractures is necessary for late ambulatory and early non-ambulatory stages. Many advocate continued use of passive standing devices or a power standing wheelchair into the late non-ambulatory stage if contractures are not too severe to restrict positioning and if devices are tolerable.²⁴

Surgical intervention for lower-limb contractures

No unequivocal situations exist in which lower-limb contracture surgery is invariably indicated. If lower-limb contractures are present despite range-of-motion exercises and splinting, there are certain scenarios in which surgery can be considered.^{15,25–32} In such cases, the approach must be strictly individualised.

Joints most amenable to surgical correction, and even subsequent bracing, are the ankles, and to a slightly lesser extent, the knees. The hip responds poorly to surgery for fixed flexion contractures and cannot be effectively braced. Surgical release or lengthening of the iliopsoas muscle and other hip flexors might further weaken these muscles and make the patient unable to walk, even with contracture correction. In ambulant patients, hip deformity often corrects itself if knees and ankles are straightened because hip flexion and lumbar lordosis might be compensatory and not fixed.

Various surgical options exist, none of which could be recommended above any other. Options for surgery will depend on individual circumstances, but there can be a role for surgery in the ambulatory and non-ambulatory phases.

Early ambulatory phase

Procedures for early contractures including heel-cord (tendo-Achillis) lengthenings for equinus contractures, hamstring tendon lengthenings for knee-flexion contractures, anterior hip-muscle releases for hip-flexion contractures, and even excision of the iliotibial band for hip-abduction contractures have been performed in patients as young as 4–7 years.^{25,26} Some clinics even recommend that the procedures are done before contractures develop.^{25,26} However, this approach, developed 20–25 years ago in an attempt to balance musculature when muscle strength is good,²⁵ is not widely practised today but does still have some proponents.

Middle ambulatory phase

Interventions in this phase are designed to prolong ambulation because a contracted joint can limit walking, even if overall limb musculature has sufficient strength. There is some evidence to suggest that walking can be prolonged by surgical intervention for 1–3 years,^{15,25–27,30–32} but consensus on surgical correction of contractures for prolonging ambulation is difficult because it is hard to assess objectively the results reported. Non-operated patients who are not on steroids lose ambulation over a

wide range of ages. Consequently, use of mean age as a comparator for a particular intervention is not statistically relevant if small numbers are compared. We found that few studies have addressed the fact that, rather than a sudden loss of ambulation, walking ability gradually decreases over a 1–2-year period. This makes it difficult to assess prolongation of walking with specific interventions. Prolonging ambulation by use of steroids has, for the moment, further increased uncertainty of the value of contracture corrective surgery. Bearing these considerations in mind, certain recommendations can be offered to prolong the period of walking, irrespective of steroid status. Muscle strength and range of motion around individual joints should be considered before deciding on surgery.

Approaches to lower-extremity surgery to maintain walking include bilateral multi-level (hip–knee–ankle or knee–ankle) procedures, bilateral single-level (ankle) procedures, and, rarely, unilateral single-level (ankle) procedures for asymmetric involvement.^{15,25–32} The surgeries involve tendon lengthening, tendon transfer, tenotomy (cutting the tendon), along with release of fibrotic joint contractures (ankle) or removal of tight fibrous bands (iliotibial band at lateral thigh from hip to knee). Single-level surgery (eg, correction of ankle equinus deformity >20°) is not indicated if there are knee flexion contractures of 10° or greater and quadriceps strength of grade 3/5 or less. Equinus foot deformity (toe-walking) and varus foot deformities (severe inversion) can be corrected by heel-cord lengthening and tibialis posterior tendon transfer through the interosseous membrane onto the dorsolateral aspect of the foot to change plantar flexion–inversion activity of the tibialis posterior to dorsiflexion–eversion.^{15,27–29,32} Hamstring lengthening behind the knee is generally needed if there is a knee-flexion contracture of more than 15°.

After tendon lengthening and tendon transfer, postoperative bracing might be needed, which should be discussed preoperatively. Following tenotomy, bracing is always needed. When surgery is performed to maintain walking, the patient must be mobilised using a walker or crutches on the first or second postoperative day to prevent further disuse atrophy of lower-extremity muscles. Post-surgery walking must continue throughout limb immobilisation and post-cast rehabilitation. An experienced team with close coordination between the orthopaedic surgeon, physical therapist, and orthotist is required.

Late ambulatory phase

Despite promising early results,^{30–32} surgery in the late ambulatory phase has generally been ineffective and served to obscure the benefits gained by more timely and earlier interventions.

Early non-ambulatory phase

In the early non-ambulatory phase, some clinics perform extensive lower-extremity surgery and bracing to regain

ambulation within 3–6 months after walking ability is lost. However, this is generally ineffective and not currently considered appropriate.

Late non-ambulatory phase

Severe equinus foot deformities of more than 30° can be corrected with heel-cord lengthening or tenotomy and varus deformities (if present) with tibialis posterior tendon transfer, lengthening, or tenotomy. This is done for specific symptomatic problems, generally to alleviate pain and pressure, to allow the patient to wear shoes, and to correctly place the feet on wheelchair footrests.^{27,28} This approach is not recommended as routine.

Assistive/adaptive devices for function

AFOs are not indicated for use during ambulation because they typically limit compensatory movements needed for efficient ambulation, add weight that can compromise ambulation, and make it difficult to rise from the floor. During the late ambulatory stage, a KAFO with locked knee might prolong ambulation but is not essential.

During the early ambulatory stage, a lightweight manual mobility device is appropriate to allow the child to be pushed on occasions when long-distance mobility demands exceed endurance. In the late ambulatory stage, an ultra lightweight manual wheelchair with solid seat and back, seating to support spinal symmetry and neutral lower extremity alignment, and swing-away footrests is necessary. In the early non-ambulatory stage, a manual wheelchair with custom seating and recline features might serve as a necessary back-up to a powered wheelchair.

As functional community ambulation declines, a powered wheelchair is advocated. Increasingly, rehabilitation providers recommend custom seating and power-positioning components for the initial powered wheelchair, to include a headrest, solid seat and back, lateral trunk supports, power tilt and recline, power-adjustable seat height, and power-elevating leg rests (with swing-away or flip-up footrests to facilitate transfers). Some recommend power standing chairs. Additional custom seating modifications could include a pressure-relieving cushion, hip guides, and flip-down knee adductors.

As upper-extremity strength declines, referral to a specialist in rehabilitation assistive technology is necessary for evaluation of alternative computer or environmental control access, such as a tongue-touch control system, switch scanning, infrared pointing, or eye-gaze selection.^{33–35}

Other adaptations in the late ambulatory and non-ambulatory stages could include an elevated lap tray, with adaptive straw, hands-free water pouch, and/or turntable (indicated if the hand cannot be brought to the mouth or if biceps strength is grade 2/5), power adjustable bed with pressure relief cushion or mattress, bathing and bathroom equipment, and transfer devices, including a hydraulic patient lift, ceiling lift (hoist), slide sheets, and environmental control options.

Recommendations for exercise

Limited research has been carried out on the type, frequency, and intensity of exercise that is optimum in DMD.^{36–48} Many recommendations are made on the basis of the known pathophysiology and animal studies showing contraction-induced muscle injury in dystrophinopathy.⁴⁹

Submaximum, aerobic exercise/activity is recommended by some clinicians, especially early in the course of the disease when residual strength is higher, whereas others emphasise avoidance of overexertion and overwork weakness.⁴⁴ High-resistance strength training and eccentric exercise are inappropriate across the lifespan owing to concerns about contraction-induced muscle-fibre injury. To avoid disuse atrophy and other secondary complications of inactivity, it is necessary that all boys who are ambulatory or in the early non-ambulatory stage participate in regular submaximum (gentle) functional strengthening/activity, including a combination of swimming-pool exercises and recreation-based exercises in the community. Swimming, which might have benefits for aerobic conditioning and respiratory exercise, is highly recommended from the early ambulatory to early non-ambulatory phases and could be continued in the non-ambulatory phase as long as it is medically safe. Additional benefits might be provided by low-resistance strength training and optimisation of upper body function. Significant muscle pain or myoglobinuria in the 24-h period after a specific activity is a sign of overexertion and contraction-induced injury, and if this occurs the activity should be modified.⁵⁰

Skeletal management

Spinal management

Patients not treated with glucocorticoids have a 90% chance of developing significant progressive scoliosis^{28,51} and a small chance of developing vertebral compression fractures due to osteoporosis. Daily glucocorticoid treatment has been shown to reduce the risk of scoliosis,^{52,53} however, risk of vertebral fracture is increased.^{54,55} Whether glucocorticoids reduce the risk of scoliosis in the long term or simply delay its onset is, as yet, unclear. Spinal care should involve an experienced spinal surgeon, and comprises scoliosis monitoring, support of spinal/pelvic symmetry and spinal extension by the wheelchair seating system, and (in patients using glucocorticoids, in particular) monitoring for painful vertebral body fractures.

Monitoring for scoliosis should be by clinical observation through the ambulatory phase, with spinal radiography warranted only if scoliosis is observed. In the non-ambulatory phase, clinical assessment for scoliosis is essential at each visit. Spinal radiography is indicated as a baseline assessment for all patients around the time that wheelchair dependency begins with a sitting anteroposterior full-spine radiograph and lateral projection film. An anteroposterior spinal radiograph is warranted annually for curves of less than 15–20° and every 6 months for curves of more than 20°, irrespective

of glucocorticoid treatment, up to skeletal maturity. Gaps of more than a year between radiographs increase the risk of missing a worsening of scoliosis. After skeletal maturity, decisions about radiographs again relate to clinical assessment.

Spinal fusion is done to straighten the spine, prevent further worsening of deformity, eliminate pain due to vertebral fracture with osteoporosis, and slow the rate of respiratory decline.^{28,56} Anterior spinal fusion is inappropriate in DMD. Posterior spinal fusion is warranted only in non-ambulatory patients who have spinal curvature of more than 20°, are not on glucocorticoids, and have yet to reach skeletal maturity.^{28,57,58} In patients on glucocorticoids, surgery might also be warranted if curve progression continues and is associated with vertebral fractures and pain after optimisation of medical therapy to strengthen the bones, irrespective of skeletal maturation.

When deciding the extent of surgical stabilisation for scoliosis, if there is pelvic obliquity of more than 15°, it is necessary to perform correction and stabilisation with

bone fusion from the upper thoracic region to the sacrum.^{59,60} If there is no pelvic obliquity, these recommendations can also be used, but fusion to the fifth lumbar vertebra is also effective. Use of a thoraco-lumbar-sacral orthosis is inappropriate if surgery is to be done, but it can be considered for patients unable to undergo spinal fusion.

Bone-health management

Bone health is an important part of the lifelong care of patients with DMD. Two previous consensus statements have been published.^{61,62} Figure 1 outlines the risk factors, possible assessments, and treatment strategies for patients who have DMD. Awareness of potential problems and means to assess these problems and interventions are important, preferably in conjunction with local specialists in bone health and endocrine assessment. This is an area in which further research is needed to establish parameters for best practice.

Fracture management

Fractures are common in DMD and an increased frequency of fractures has been observed with glucocorticoid treatment.⁶³ Taking into account the guidelines for safe anaesthesia in DMD, internal fixation is warranted for severe lower-limb fractures in ambulatory patients to allow prompt rehabilitation and the greatest possible chance of maintaining ambulation. In the non-ambulatory patient, the requirement for internal fixation is less acute. Splinting or casting of a fracture is necessary for the non-ambulatory patient, and is appropriate in an ambulatory patient if it is the fastest and safest way to promote healing and does not compromise ambulation during healing.

Respiratory management

The aim of respiratory care is to allow timely prevention and management of complications. A structured, proactive approach to respiratory management that includes use of assisted cough and nocturnal ventilation has been shown to prolong survival.⁶⁴⁻⁶⁶ Patients with DMD are at risk of respiratory complications as their condition deteriorates due to progressive loss of respiratory muscle strength. These complications include ineffective cough,⁶⁷⁻⁷⁵ nocturnal hypoventilation, sleep disordered breathing, and ultimately daytime respiratory failure.⁷⁶⁻⁸⁴

Guidelines for respiratory management in DMD have already been published.⁸⁵ The care team must include a physician and therapist with skill in the initiation and management of non-invasive ventilation and associated interfaces,^{36,86-91} lung-volume recruitment techniques,⁹²⁻⁹⁴ and manual and mechanically assisted cough.⁹⁵⁻¹⁰² Assessments and interventions will need to be re-evaluated as the condition changes (figures 2 and 3, panel 1). In the ambulatory stage, minimum assessment of pulmonary function (such as measurement of forced vital capacity at least annually) allows familiarity with the equipment and

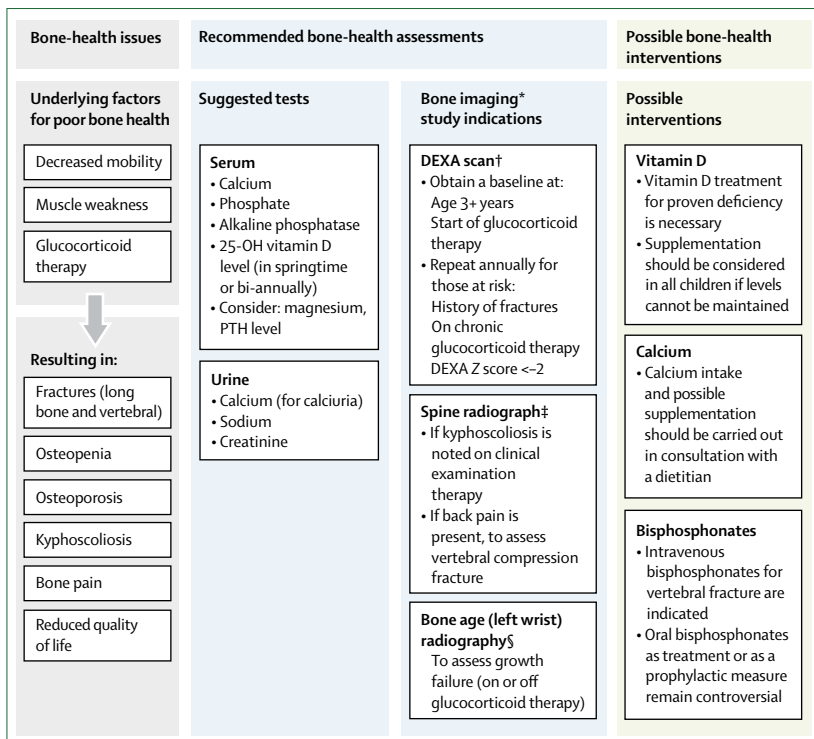


Figure 1: Bone-health management

Information provided in this figure was not derived from RAND Corporation–University of California Los Angeles Appropriateness Method data and was produced solely using expert discussion. DEXA=dual-energy x-ray absorptiometry. PTH=parathyroid hormone. *All imaging assessments should be done at a facility capable of performing and interpreting age-appropriate studies. †A DEXA scan is a better measure than plain film radiographs for detection of osteopenia or osteoporosis. DEXA scans, to assess bone mineral content or body composition, need to be interpreted as a Z score for children and a T score for adults (compared with age-matched and sex-matched controls). ‡Spine radiographs (posterior/anterior and lateral views) are used for the assessment of scoliosis, bone pain, and compression fractures. It is preferable to obtain them in the standing position, especially if bone pain is the presenting symptom. Useful information can still be obtained in the sitting position for the non-weight-bearing patient. §Bone-age measurements should be done in patients with growth failure (height for age <5% percentile or if linear growth is faltering). If abnormal (>2 SD below the mean), a referral needs to be made to a paediatric endocrinologist.

the team can assess the maximum respiratory function achieved. The main need for pulmonary care is in the period after the loss of independent ambulation. The pulmonary section of figure 2 in part 1 of this Review links these assessments and interventions to the various stages of disease, and comprises a respiratory action plan that should be enacted with increasing disease severity.¹ Although the expert panel recognises that assisted ventilation via tracheostomy can prolong survival, the schema is intended to advocate strongly for the use of non-invasive modes of assisted ventilation. Particular attention to respiratory status is required around the time of planned surgery (see below).

Immunisation with 23-valent pneumococcal polysaccharide vaccine is indicated for patients aged 2 years and older. Annual immunisation with trivalent inactivated influenza vaccine is indicated for patients 6 months of age and older. Neither the pneumococcal vaccine nor the influenza vaccine are live vaccines, so can be administered to patients treated with glucocorticoids, but the immune response to vaccination might be diminished. Up-to-date and detailed information on immunisation indications, contraindications, and schedules can be obtained from various sources, including the American Academy of Pediatrics and the US Centers for Disease Control and Prevention (CDC).

During an established infection, in addition to use of manually and mechanically assisted cough, antibiotics are necessary, irrespective of oxygen saturation if positive evidence of an infection is established on culture, and irrespective of culture results if pulse oximetry remains below 95% in room air. Supplemental oxygen therapy should be used with caution because oxygen therapy can apparently improve hypoxaemia while masking the underlying cause, such as atelectasis or hypoventilation. Oxygen therapy might impair central respiratory drive and exacerbate hypercapnia.^{91,95,103} If a patient has hypoxaemia due to hypoventilation, retained respiratory secretions, and/or atelectasis, then manual and mechanically assisted cough and non-invasive ventilatory support are necessary.⁶⁶ Substitution of these methods by oxygen therapy is dangerous.⁶⁶

Cardiac management

Cardiac disease in DMD manifests most often as a cardiomyopathy and/or cardiac arrhythmia.^{104–106} The myocardium at autopsy displays areas of myocyte hypertrophy, atrophy, and fibrosis.¹⁰⁷ Progressive cardiomyopathy is currently a major source of morbidity and mortality in DMD and Becker muscular dystrophy, particularly since advances have been made in the treatment of the muscle disease and pulmonary function.^{65,85,89,108} The natural history of cardiac disease in DMD requires further study, especially to define its onset more precisely with newer imaging technologies; however, there is clearly disease in the myocardium long before the onset of clinical symptoms.^{104,109–112}

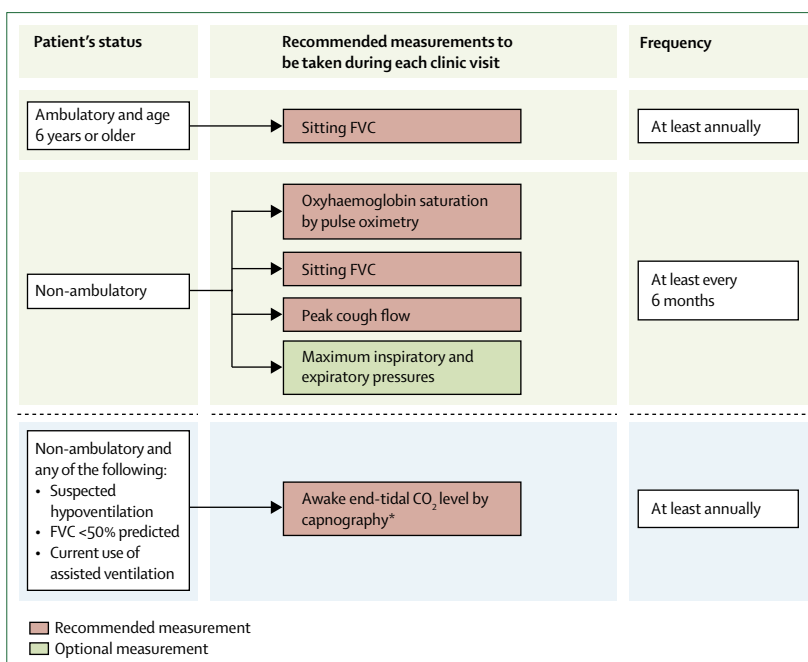


Figure 2: Respiratory assessment (in the clinic) of patients with Duchenne muscular dystrophy
FVC=forced vital capacity. *Also measure end-tidal CO₂ any time that a patient with an FVC of <50% predicted has a respiratory infection.

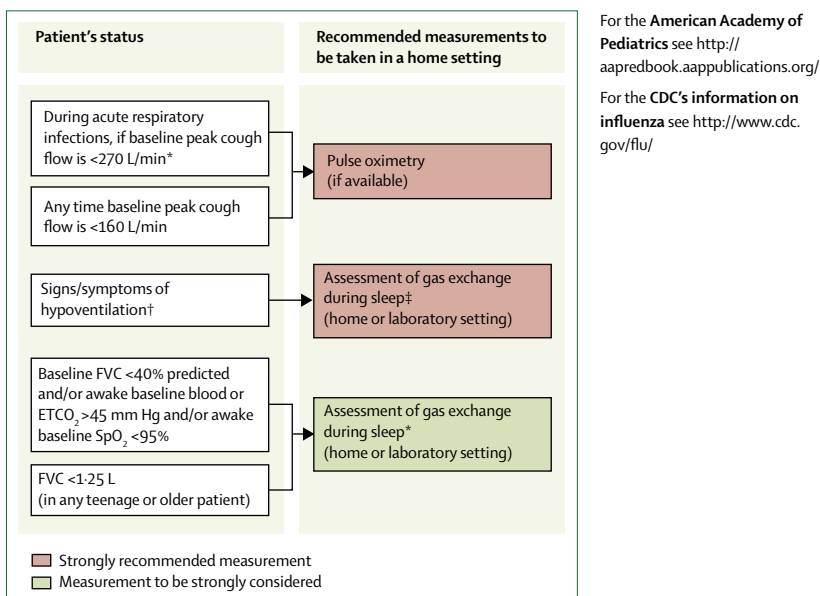


Figure 3: Respiratory assessment (at home) of patients with Duchenne muscular dystrophy

ETCO₂=end-tidal CO₂. FVC=forced vital capacity. SpO₂=pulse oximetry. *All specified threshold values of peak cough flow and maximum expiratory pressure apply to older teenage and adult patients. †Signs/symptoms of hypoventilation include fatigue, dyspnoea, morning or continuous headaches, sleep dysfunction (frequent nocturnal awakenings [>3], difficult arousal), hypersomnolence, awakenings with dyspnoea and tachycardia, difficulty with concentration, frequent nightmares. ‡Dual-channel oximetry-capnography in the home is strongly recommended, but other recommended methods include home oximetry during sleep and polysomnography, the method of choice being determined by local availability, expertise, and clinician preference.

For the American Academy of Pediatrics see <http://aapredbook.aappublications.org/>

For the CDC's information on influenza see <http://www.cdc.gov/flu/>

Panel 1: Respiratory interventions indicated in patients with Duchenne muscular dystrophy

Step 1: volume recruitment/deep lung inflation technique

Volume recruitment/deep lung inflation technique (by self-inflating manual ventilation bag or mechanical insufflation–exsufflation) when FVC <40% predicted

Step 2: manual and mechanically assisted cough techniques

Necessary when:

- Respiratory infection present and baseline peak cough flow <270 L/min*
- Baseline peak cough flow <160 L/min or maximum expiratory pressure <40 cm water
- Baseline FVC <40% predicted or <1.25 L in older teenager/adult

Step 3: nocturnal ventilation

Nocturnal ventilation† is indicated in patients who have any of the following:

- Signs or symptoms of hypoventilation (patients with FVC <30% predicted are at especially high risk)
- A baseline SpO₂ <95% and/or blood or end-tidal CO₂ >45 mm Hg while awake
- An apnoea–hypopnoea index >10 per hour on polysomnography or four or more episodes of SpO₂ <92% or drops in SpO₂ of at least 4% per hour of sleep

Optimally, use of lung volume recruitment and assisted cough techniques should always precede initiation of non-invasive ventilation

Step 4: daytime ventilation

In patients already using nocturnally assisted ventilation, daytime ventilation‡ is indicated for:

- Self extension of nocturnal ventilation into waking hours
- Abnormal deglutition due to dyspnoea, which is relieved by ventilatory assistance
- Inability to speak a full sentence without breathlessness, and/or
- Symptoms of hypoventilation with baseline SpO₂ <95% and/or blood or end-tidal CO₂ >45 mm Hg while awake

Continuous non-invasive assisted ventilation (with mechanically assisted cough) can facilitate endotracheal extubation for patients who were intubated during acute illness or during anaesthesia, followed by weaning to nocturnal non-invasive assisted ventilation, if applicable

Step 5: tracheostomy

Indications for tracheostomy include:

- Patient and clinician preference§
- Patient cannot successfully use non-invasive ventilation
- Inability of the local medical infrastructure to support non-invasive ventilation
- Three failures to achieve extubation during critical illness despite optimum use of non-invasive ventilation and mechanically assisted cough
- The failure of non-invasive methods of cough assistance to prevent aspiration of secretions into the lung and drops in oxygen saturation below 95% or the patient's baseline, necessitating frequent direct tracheal suctioning via tracheostomy

FVC=forced vital capacity. SpO₂=pulse oximetry. *All specified threshold values of peak cough flow and maximum expiratory pressure apply to older teenage and adult patients. †Recommended for nocturnal use: non-invasive ventilation with pressure cycled bi-level devices or volume cycled ventilators or combination volume-pressure ventilators. In bi-level or pressure support modes of ventilation, add a back-up rate of breathing. Recommended interfaces include a nasal mask or a nasal pillow. Other interfaces can be used and each has its own potential benefits. ‡Recommended for day use: non-invasive ventilation with portable volume cycled or volume-pressure ventilators; bi-level devices are an alternative. A mouthpiece interface is strongly recommended during day use of portable volume-cycled or volume-pressure ventilators, but other ventilator-interface combinations can be used depending on clinician preference and patient comfort. §However, the panel advocates the long-term use of non-invasive ventilation up to and including 24 h/day in eligible patients.

In the traditional reactive approach, failure to see a cardiac specialist until late in the disease, after clinical manifestations of cardiac dysfunction are evident, have led to late treatment and poor outcomes.¹⁰⁴ Clinical

manifestations of heart failure (fatigue, weight loss, vomiting, abdominal pain, sleep disturbance, and inability to tolerate daily activities) are often unrecognised until very late owing to musculoskeletal limitations.¹⁰⁴

Two overlapping sets of published guidelines on the cardiac care of patients who have DMD are currently available.^{104,113} The care team should include a cardiac specialist who should be involved with the patient and family after confirmation of the diagnosis, not only to manage cardiomyopathy, but also to initiate a relationship to ensure long-term cardiovascular health.

Baseline assessment of cardiac function should be done at diagnosis or by the age of 6 years, especially if this can be done without sedation. Clinical judgment should be used for patients under the age of 6 years who require sedation. The recommendation to initiate echocardiographic screening at the time of diagnosis or by the age of 6 years was judged necessary, even though the incidence of echocardiographic abnormalities is low in children aged less than 8–10 years. However, there are cases in which abnormalities do exist, which can affect clinical decision making, including decisions about the initiation of corticosteroids and planning for any anaesthesia.¹¹⁴ A baseline echocardiogram obtained at this age also allows for screening for anatomical abnormalities (eg, atrial or ventricular septal defects, patent ductus arteriosus), which might affect long-term cardiovascular function.

Minimum assessment should include, although is not limited to, an electrocardiogram and a non-invasive cardiac imaging study (ie, echocardiogram). Assessment of cardiac function should occur at least once every 2 years until the age of 10 years. Annual complete cardiac assessments should begin at the age of 10 years or at the onset of cardiac signs and symptoms if they occur earlier. Abnormalities of ventricular function on non-invasive cardiac imaging studies warrant increased surveillance (at least every 6 months) and should prompt initiation of pharmacological therapy, irrespective of the age at which they are detected.^{104,113}

Consideration should be given to the use of angiotensin-converting-enzyme inhibitors as first-line therapy. β blockers and diuretics are also appropriate, and published guidelines should be followed for the management of heart failure.^{104,113,115–118} Recent evidence from clinical trials supports the treatment of cardiomyopathy associated with DMD before signs of abnormal functioning. Further studies are awaited to allow firm recommendations to be made.^{108,119–123}

Signs or symptoms of abnormalities of cardiac rhythm should be promptly investigated with Holter or event monitor recording and should be treated.^{124–127} Sinus tachycardia is common in DMD, but is also noted in systolic dysfunction. New-onset sinus tachycardia in the absence of a clear cause should prompt assessment, including that of left-ventricular function.

Individuals on glucocorticoids need additional monitoring from the cardiovascular perspective, particularly for

hypertension, which might necessitate adjustment in the glucocorticoid dose (table 2 in part 1 of this Review).¹ Systemic arterial hypertension should be treated.

Prevention of systemic thromboembolic events by anticoagulation therapy can be considered in severe cardiac dysfunction, but is inappropriate in earlier cardiac dysfunction. The usefulness of an internal cardiac defibrillator has not been established and needs further research.

Because of the morbidity and mortality associated with cardiomyopathy, additional research is clearly needed, not only to define the natural history of the disease process, but also to establish treatments specific for the dystrophin-deficient myocardium. Further studies of pharmacological approaches aimed at early intervention are needed to delay the underlying disease process. With generally improved fitness of patients who have DMD, the option of cardiac transplant might need to be addressed in the future.

Nutritional, swallowing, gastrointestinal, and speech and language management

Patients might be at risk of both undernutrition/malnutrition and being overweight/obese at different ages and under different circumstances, in addition to deficiencies in calorie, protein, vitamin, mineral, and fluid intake. In later stages, pharyngeal weakness leads to dysphagia, further accentuating nutritional issues and gradual loss of respiratory muscle strength, combined with poor oral intake, and can result in severe weight loss and the need to consider tube feeding. Constipation might also be seen, typically in older patients and after surgery. With increasing survival, other complications are being reported, including gastric and intestinal dilatation related to air swallowing due to ventilator use, or more rarely to delayed gastric emptying and ileus. As the condition progresses, access to a dietitian or nutritionist, a swallowing/speech and language therapist, and a gastroenterologist is needed for the following reasons: (1) to guide the patient to maintain good nutritional status to prevent both undernutrition/malnutrition and being overweight/obese, and to provide a well-balanced, nutrient-complete diet (adding tube feeding, if necessary); (2) to monitor and treat swallowing problems (dysphagia) to prevent aspiration and weight loss, and to assess and treat delayed speech and language problems; and (3) to treat the common problems of constipation and gastro-oesophageal reflux with both medication and non-medication therapies.

Nutritional management

Maintaining good nutritional status, defined as weight for age or body-mass index for age from the 10th to 85th percentiles on national percentile charts, is essential. Poor nutrition can potentially have a negative effect on almost every organ system. Anticipatory guidance and prevention of undernutrition/malnutrition and being

overweight/obese should be goals from diagnosis throughout life. The monitoring and triggers for referral to an expert dietitian/nutritionist in DMD are described in panel 2.^{128–132} Diet should be assessed for energy, protein, fluid, calcium, vitamin D, and other nutrients. We recommend that each patient should receive a daily multivitamin supplement with vitamin D and minerals. If this is not general practice, a computer nutrient analysis of the patient's diet can provide evidence for the possible need for specific foods or nutrient supplements. If there is a suspicion of undernutrition/malnutrition and poor intake, serum vitamin concentrations can be obtained and supplements could be recommended. Nutritional recommendations with regard to bone health are shown in figure 1.

Swallowing management

Clinical swallowing examination is indicated if there is unintentional weight loss of 10% or more or a decline in the expected age-related weight gain. Prolonged meal times (>30 min) or meal times accompanied by fatigue, excessive spilling, drooling, pocketing, or any other clinical indicators of dysphagia make referral necessary, as do persistent coughing, choking, gagging, or wet vocal quality during eating or drinking.¹³³ An episode of aspiration pneumonia, unexplained decline in pulmonary function, or fever of unknown origin might be signs of unsafe swallowing, necessitating assessment. There might be contributory factors for weight loss due to complications in other systems, such as cardiac or respiratory compromise.

A videofluoroscopic study of swallowing (also referred to as a modified barium swallow) is necessary for patients with clinical indicators of possible aspiration and pharyngeal dysmotility.¹³⁴ Swallowing interventions and compensatory strategies are appropriate for patients with dysphagia. These should be delivered by a speech and language pathologist, with training and expertise in the treatment of oral-pharyngeal dysphagia, who can assess the likely appropriateness of interventions and deliver an individualised dysphagia treatment plan with the aim of preserving optimum swallowing function.

As the disease progresses, most patients begin to experience increasing difficulty with chewing and subsequently exhibit pharyngeal-phase swallowing deficits in young adulthood.^{135–140} The onset of dysphagia symptoms can be gradual and the impact of oral-pharyngeal dysphagia might be under-recognised and under-reported by patients.¹⁴⁰ This leads to risk of complications, such as aspiration and inability to take in enough fluids and food energy to maintain weight.^{135–139} Weight problems can also be due to an inability to meet the increased effort of breathing.^{135–139}

When it is no longer possible to maintain weight and hydration by oral means, gastric-tube placement should be offered. Discussions between other specialists and the family should involve explanations of the potential risks

For the US national percentile charts see <http://www.cdc.gov/growthcharts/>

Panel 2: Improving underweight and overweight status

Monitor regularly for:

- Weight*
- Linear height in ambulatory patients (measured every 6 months)
- Arm span/segmental length in non-ambulatory patients†

Refer for a nutritional/dietetic assessment:

- At diagnosis
- At initiation of glucocorticoids
- If the patient is underweight (<10th age percentile)‡
- If the patient is at risk of becoming overweight (85–95th age percentile)‡
- If the patient is overweight (>95th age percentile)‡
- If there has been unintentional weight loss or gain
- If there has been poor weight gain
- If major surgery is planned
- If the patient is chronically constipated
- If dysphagia is present

National guidelines and recommendations for diets for underweight and overweight individuals can be found in Kleinman,¹³⁸ and are often available from charities/associations for cardiac disorders and diabetes. *In non-ambulatory patients, wheelchair weight should be obtained first, then patient and wheelchair weight, or caregiver weight should be obtained first, then the weight of the patient held by the caregiver. †If the patient has scoliosis, the arm span should be measured if possible. ‡Overweight/underweight status should be judged on the basis of local body-mass index percentiles (weight for age is a possible alternative if height is unavailable). Body composition is altered in Duchenne muscular dystrophy (DMD) owing to the relatively low lean body mass seen in DMD with a relatively higher fat body mass.¹³⁹

and benefits of the procedure. A gastrostomy can be placed endoscopically or via open surgery, taking into account anaesthetic and ethical considerations and family and personal preference.¹⁴¹

Gastrointestinal management

Constipation and gastro-oesophageal reflux are the two most common gastrointestinal conditions seen in children with DMD in clinical practice.^{133,142,143} Stool softeners, laxatives, and stimulants are necessary if the patient has acute constipation or faecal impaction, and use of enemas might be needed occasionally. Daily use of laxatives, such as milk of magnesia, lactulose, or polyethylene glycol, is necessary if symptoms persist. In the case of persistent constipation, adequacy of free fluid intake should be determined and addressed. In cases of faecal impaction, manual/digital disimpaction under sedation or general anaesthesia is of uncertain benefit. Enemas, stimulant laxatives, such as dulcolax and senna, and stool softeners can be tried before considering manual disimpaction. Milk and molasses enemas are not recommended for paediatric patients. Supplementation with dietary fibre for chronic or severe constipation might worsen symptoms, particularly if fluid intake is not increased.

Gastro-oesophageal reflux is typically treated with proton-pump inhibitors or H₂ receptor antagonists, with prokinetics, sucralfate, and neutralising antacids as adjunctive therapies. Common practice is to prescribe

acid blockers in children on corticosteroid therapy or oral bisphosphonates to avoid complications such as gastritis and to prevent reflux oesophagitis. It is necessary to recommend nutritional interventions for a patient who has symptoms suggestive of reflux.

Speech and language management

Delayed acquisition of early language milestones is common in boys who have DMD, with differences in language acquisition and language-skill deficits persisting throughout childhood.¹⁴⁴ Referral to a speech and language pathologist for assessment and treatment is necessary on suspicion of difficulties with speech acquisition or with continuing deficits in language comprehension or oral expression. Oral motor exercises and articulation therapy are necessary for young boys with DMD with hypotonia and in older patients who have deteriorating oral muscle strength and/or impaired speech intelligibility. For older patients, compensatory strategies, voice exercises, and speech amplifications are appropriate if intelligibility deteriorates due to problems with respiratory support for speech and vocal intensity. Voice output communication aid assessment could be appropriate at all ages if speech output is limited.

Pain management

Pain of varying intensity occurs in DMD.^{145,146} Effective pain management requires accurate determination of the cause. Interventions to address pain include physical therapy, postural correction, appropriate and individualised orthoses, wheelchair and bed enhancements, and pharmacological approaches (eg, muscle relaxants and anti-inflammatory medications). Pharmacological interventions must take into account possible interactions with other medications (eg, steroids and non-steroidal anti-inflammatory drugs) and their side-effects, particularly those that might negatively affect cardiac or respiratory function. Rarely, orthopaedic intervention might be indicated for intractable pain that is amenable to surgery. Back pain, particularly in the context of glucocorticoid treatment, is an indication that a careful search for vertebral fractures is needed; such fractures respond well to bisphosphonate treatment and/or calcitonin.^{147,148} Research on effective pain interventions across the lifespan of individuals with DMD is warranted.^{146,149,150}

Surgical considerations

Various situations, related (muscle biopsy, joint contracture surgery, spinal surgery, and gastrostomy) and unrelated (intercurrent acute surgical events) to DMD, might require the use of general anaesthesia. There are several condition-specific issues that need to be taken into account for the planning of safe surgery. Surgery in a patient who has DMD should be done in a full-service hospital that has experience of patients with DMD. In addition, as with any situation in which

patients are on chronic corticosteroid treatment, consideration needs to be given to steroid cover over the period of surgery.¹⁵¹

Anaesthetic agents

The exclusive use of a total intravenous anaesthetic technique is strongly recommended owing to the risk of malignant hyperthermia-like reactions and rhabdomyolysis with exposure to inhalational anaesthetic agents, such as halothane and isoflurane.^{152,153} Depolarising muscle relaxants, such as suxamethonium chloride, are absolutely contraindicated owing to the risk of fatal reactions.^{152,153}

Blood loss

To minimise blood loss and its effects intraoperatively in major surgeries, such as spinal fusion, it is necessary to use mildly hypotensive anaesthetics, crystalloid bone allograft, and cell-saver technology. Other interventions, such as the use of aminocaproic acid or tranexamic acid to diminish intraoperative bleeding, can be considered.¹⁵⁴ Postoperative anticoagulation with heparin and/or aspirin is inappropriate. Use of compression stockings or sequential compression for prevention of deep-vein thrombosis might be indicated.

Cardiac considerations

An echocardiogram and electrocardiogram should be done before general anaesthesia. They should also be done if the patient is undergoing conscious sedation or regional anaesthesia if the last investigation was more than 1 year previously or if there had been an abnormal echocardiogram in the preceding 7–12 months. For local anaesthesia, an echocardiogram should be done if an abnormal result had been obtained previously.

Respiratory considerations

Respiratory interventions are intended to provide adequate respiratory support during induction of, maintenance of, and recovery from procedural sedation or general anaesthesia. In particular, they are designed to reduce the risk of post-procedure endotracheal extubation failure, postoperative atelectasis, and pneumonia.¹⁵³ These goals can be achieved by providing non-invasively assisted ventilation and assisted cough after surgery for patients with significant respiratory-muscle weakness, as indicated by sub-threshold preoperative pulmonary function test results.

Preoperative training in and postoperative use of manual and assisted cough techniques are necessary for patients whose baseline peak cough flow is below 270 L/min or whose baseline maximum expiratory pressure is below 60 cm water (these threshold levels of peak cough flow and maximum expiratory pressure apply to older teenage and adult patients).¹⁵⁵ Preoperative training in and postoperative use of non-invasive ventilation is strongly recommended for patients with a baseline forced vital capacity of below 50% predicted and

necessary with a forced vital capacity of below 30% predicted.¹⁵⁵ Incentive spirometry is not indicated owing to potential lack of efficacy in patients with respiratory-muscle weakness and the availability of preferred alternatives, such as mechanical insufflation–exsufflation. After careful consideration of the risks and benefits, patients with significant respiratory-muscle weakness might be eligible for surgery, albeit with increased risk, if these patients are highly skilled preoperatively in the use of non-invasive ventilation and assisted cough.^{156,157}

Emergency-care considerations

Because of the involvement of different systems in DMD, many factors must be taken into account on presentation of a patient to an emergency room. From the outset, the diagnosis, current medication, respiratory status, cardiac status, and associated medical disorders should be made clear to the emergency-room staff. Because many health professionals are not aware of the potential management strategies available for DMD, the current life expectancy and expected good quality of life should also be explained to reduce the risk of therapeutic nihilism in acute care. Chronic glucocorticoid use (if relevant) needs to be made clear, with its concomitant risk of reduced stress response, masking of infection, and possible gastric ulceration. Risk of respiratory failure supervening during an intercurrent infection is high in those with borderline respiratory function. Use of opiates and other sedating medication is essential, as is the use of oxygen without ventilation owing to the risk of hypercapnia. If nocturnal ventilation is already being used, then access to the ventilator is essential during any acute event or intervention. For patients who are already using ventilation, the team involved in the respiratory care of the patient should be contacted as soon as possible. Awareness of the risk of arrhythmias and cardiomyopathy is important. Anaesthetic issues, as previously discussed, need to be taken into account at all times if surgery or sedation is needed.

Conclusions

This Review is the result of the first international collaboration of a uniquely broad group of experts in DMD management to develop comprehensive care recommendations. This effort was supported by a rigorous method—the RAND Corporation–University of California Los Angeles Appropriateness Method²—which expands the consensus-building process, not only to establish the parameters for optimum care, but also to identify areas of uncertainty in which further work is needed.

A model of care emerged during the process of evaluating assessments and interventions for DMD that emphasises the importance of multidisciplinary care for patients with DMD. For example, the input of physiotherapy, rehabilitation and orthopaedic management of contractures (where necessary) has to be taken as a whole, together with the impact of the use of corticosteroids, which in most boys has a significant effect on muscle

Please see erratum on final page of document

Search strategy and selection criteria

Peer-reviewed literature was searched using the key search terms of "Duchenne" or "muscular dystrophy", or both, paired with one of 410 other search terms related to a comprehensive list of assessment tools and interventions used in DMD management. The full list of search terms is available on request. The databases used included Medline, Embase, Web of Science, and the Cochrane Library. Initial inclusion criteria consisted of available abstracts of human studies published in English between 1986 and 2006. Each working group also incorporated major articles from its discipline published before 1986 and from 2007 to mid-2009 in the process of discussions, final assessments, and write-up of recommendations.

strength and function. In this context, the various specialty reports are presented in this second part of the Review.

Clearly staged assessments and interventions have been described to address the cardiac and respiratory complications that are common in DMD and provide the framework for the safe management of these complications. Respiratory interventions, in particular the institution of nocturnal ventilation, have had a major effect on survival in DMD,^{65,66} and early indications are that prompt recognition and treatment of deterioration in cardiac status will also have a significant impact.^{119,121} Further trials are awaited to determine the optimum timing to start cardioactive treatment. In the meantime, the recommendations presented here are consistent with previously published guidelines,^{113,115} and most importantly reinforce the need for active engagement with a cardiologist at every stage of the condition.

In other areas, including management of complications of the gastrointestinal tract, less work had been done previously, but we conclude that proactive management in this area is important. An increasing awareness of the possibility of gastrointestinal complications in DMD is needed; this area has been relatively poorly studied until now and will merit further investigation in emerging adult populations with DMD to delineate the burden of disease in these patients and its optimum management.

We are in an unprecedented era of hope for therapies for DMD based on the underlying molecular basis of the disease. In the meantime, these care recommendations have been developed with the support of and input from stakeholders in the DMD community to be used as the current and future benchmark for anticipatory planning, appropriate surveillance, and interventions in all areas of this complex disease. It is hoped that they will provide a catalyst to improve care for patients with DMD worldwide.

Contributors

All authors provided intellectual expertise in the study design, generation and interpretation of data, writing of the Review, and the decision to publish. KB, aided by RF, drafted and edited the Review, and approved the final version. DJB, LEC, LC, SP, and CC were involved in the literature search.

Conflicts of interest

KB is a consultant for Acceleron, AVI, Debiopharm, Prosensa, and Santhera. LEC has received honoraria from Genzyme Corporation, has participated in research supported by Genzyme Corporation, PTC Therapeutics, the Leal Foundation, and Families of Spinal Muscular Atrophy, has been awarded grant support from the National Skeletal Muscle Research Center, and is a member of the Pompe Registry Board of Advisors. All other authors have no conflicts of interest.

Acknowledgments

We thank P Eubanks, A Kenneson, A Vatave (CDC); A Cyrus and E Levy (Oak Ridge Institute for Science and Education); B Bradshaw, H Desai, P Haskell, E Hunt, A Marsden, C Muse, and L Yuson (Booz/Allen/Hamilton); and B Tseng (Massachusetts General Hospital, Harvard Medical School) for their contributions to this study and manuscript. We also thank the following organisations for their collaboration on this study: Muscular Dystrophy Association, National Institute on Disability and Rehabilitation Research, Parent Project Muscular Dystrophy, and TREAT-NMD (EC036825). In addition, we thank M Levine, M Mascarenhas, and M Thayu (Children's Hospital of Philadelphia) for their participation in discussions about bone health; and G Carter, J Engel (University of Washington), H Posselt (Montrose Access, Australia), and C Trout (University of Iowa Children's Hospital) for their advice on pain management. The CDC provided support for the project through funding, study design, collection, analysis, and interpretation of data and manuscript preparation. The findings and conclusions in this report are those of the authors and do not necessarily represent the official position of the CDC.

References

- Bushby K, Finkel R, Birnkrant DJ, et al. Diagnosis and management of Duchenne muscular dystrophy, part 1: diagnosis, and pharmacological and psychosocial management. *Lancet Neurol* 2009; published online Nov 30. DOI:10.1016/S1474-4422(09)70271-6.
- Fitch K, Bernstein SJ, Aguilar MS, et al. The RAND/UCLA appropriateness method user's manual. Santa Monica, CA: RAND Corporation, 2001.
- Brooke MH, Fenichel GM, Griggs RC, et al. Duchenne muscular dystrophy: patterns of clinical progression and effects of supportive therapy. *Neurology* 1989; **39**: 475–81.
- Johnson EW, Walter J. Zeiter Lecture: pathokinesiology of Duchenne muscular dystrophy: implications for management. *Arch Phys Med Rehabil* 1977; **58**: 4–7.
- Sutherland DH, Olshen R, Cooper L, et al. The pathomechanics of gait in Duchenne muscular dystrophy. *Dev Med Child Neurol* 1981; **23**: 3–22.
- Archibald KC, Vignos PJ Jr. A study of contractures in muscular dystrophy. *Arch Phys Med Rehabil* 1959; **40**: 150–57.
- Johnson ER, Fowler WM Jr, Lieberman JS. Contractures in neuromuscular disease. *Arch Phys Med Rehabil* 1992; **73**: 807–10.
- Hsu JD, Furumasa J. Gait and posture changes in the Duchenne muscular dystrophy child. *Clin Orthop Relat Res* 1993; **288**: 122–25.
- McDonald CM, Abresch RT, Carter GT, et al. Profiles of neuromuscular diseases. Duchenne muscular dystrophy. *Am J Phys Med Rehabil* 1995; **74** (suppl): S70–92.
- Dubowitz V. Progressive muscular dystrophy: prevention of deformities. *Clin Pediatr (Phila)* 1964; **12**: 323–28.
- Dubowitz V. Prevention of deformities. *Isr J Med Sci* 1977; **13**: 183–88.
- Fowler WM Jr. Rehabilitation management of muscular dystrophy and related disorders: II. Comprehensive care. *Arch Phys Med Rehabil* 1982; **63**: 322–28.
- Vignos PJ Jr. Physical models of rehabilitation in neuromuscular disease. *Muscle Nerve* 1983; **6**: 323–38.
- Siegel IM, Weiss LA. Postural substitution in Duchenne's muscular dystrophy. *JAMA* 1982; **247**: 584.
- Vignos PJ, Wagner MB, Karlinchak B, Katirji B. Evaluation of a program for long-term treatment of Duchenne muscular dystrophy. Experience at the University Hospitals of Cleveland. *J Bone Joint Surg Am* 1996; **78**: 1844–52.
- Vignos PJ Jr. Rehabilitation in progressive muscular dystrophy. In: Licht S, ed. *Rehabilitation and medicine*. New Haven, CT: Elizabeth Licht, 1968.

- 17 Hyde SA, Fløytrup I, Glent S, et al. A randomized comparative study of two methods for controlling Tendo Achilles contracture in Duchenne muscular dystrophy. *Neuromuscul Disord* 2000; **10**: 257–63.
- 18 Scott OM, Hyde SA, Goddard C, Dubowitz V. Prevention of deformity in Duchenne muscular dystrophy. A prospective study of passive stretching and splintage. *Physiotherapy* 1981; **67**: 177–80.
- 19 McDonald CM. Limb contractures in progressive neuromuscular disease and the role of stretching, orthotics, and surgery. *Phys Med Rehabil Clin N Am* 1998; **9**: 187–211.
- 20 Johnson EW, Kennedy JH. Comprehensive management of Duchenne muscular dystrophy. *Arch Phys Med Rehabil* 1971; **52**: 110–14.
- 21 Siegel IM. Plastic-molded knee-ankle-foot orthoses in the treatment of Duchenne muscular dystrophy. *Arch Phys Med Rehabil* 1975; **56**: 322.
- 22 Bakker JP, De Groot IJ, De Jong BA, Van Tol-De Jager MA, Lankhorst GJ. Prescription pattern for orthoses in the Netherlands: use and experience in the ambulatory phase of Duchenne muscular dystrophy. *Disabil Rehabil* 1997; **19**: 318–25.
- 23 Bakker JP, de Groot IJ, Beckerman H, de Jong BA, Lankhorst GJ. The effects of knee-ankle-foot orthoses in the treatment of Duchenne muscular dystrophy: review of the literature. *Clin Rehabil* 2000; **14**: 343–59.
- 24 Miller G, Dunn N. An outline of the management and prognosis of Duchenne muscular dystrophy in Western Australia. *Aust Paediatr J* 1982; **18**: 277–82.
- 25 Rideau Y, Dupont G, Delaubier A, Guillou C, Renardel-Irani A, Bach JR. Early treatment to preserve quality of locomotion for children with Duchenne muscular dystrophy. *Semin Neurol* 1995; **15**: 9–17.
- 26 Forst J, Forst R. Lower limb surgery in Duchenne muscular dystrophy. *Neuromuscul Disord* 1999; **9**: 176–81.
- 27 Scher DM, Mubarak SJ. Surgical prevention of foot deformity in patients with Duchenne muscular dystrophy. *J Pediatr Orthop* 2002; **22**: 384–91.
- 28 Sussman M. Duchenne muscular dystrophy. *J Am Acad Orthop Surg* 2002; **10**: 138–51.
- 29 Shapiro F. Orthopedic treatment. In: Jones HR, De Vivo DC, Darras BT, eds. *Neuromuscular disorders of infancy, childhood, and adolescence: a clinician's approach*. Amsterdam/Boston: Butterworth-Heinemann, 2003: 1259–63.
- 30 Siegel IM, Miller JE, Ray RD. Subcutaneous lower limb tenotomy is the treatment of pseudohypertrophic muscular dystrophy: description of technique and presentation of twenty-one cases. *J Bone Joint Surg Am* 1968; **50**: 1437–43.
- 31 Smith SE, Green NE, Cole RJ, Robison JD, Fenichel GM. Prolongation of ambulation in children with Duchenne muscular dystrophy by subcutaneous lower limb tenotomy. *J Pediatr Orthop* 1993; **13**: 336–40.
- 32 Miller GM, Hsu JD, Hoffer MM, Rentfro R. Posterior tibial tendon transfer: a review of the literature and analysis of 74 procedures. *J Pediatr Orthop* 1982; **2**: 363–70.
- 33 Wagner MB, Vignos PJ Jr, Carozzi C, Hull AL. Assessment of hand function in Duchenne muscular dystrophy. *Arch Phys Med Rehabil* 1993; **74**: 801–80.
- 34 Wagner MB, Vignos PJ Jr, Carozzi C. Duchenne muscular dystrophy: a study of wrist and hand function. *Muscle Nerve* 1989; **12**: 236–44.
- 35 Pellegrini N, Guillon B, Prigent H, et al. Optimization of power wheelchair control for patients with severe Duchenne muscular dystrophy. *Neuromuscul Disord* 2004; **14**: 297–300.
- 36 Eagle M, Bourke J, Bullock R, et al. Managing Duchenne muscular dystrophy—the additive effect of spinal surgery and home nocturnal ventilation in improving survival. *Neuromuscul Disord* 2007; **17**: 470–75.
- 37 Eagle M. Report on the muscular dystrophy campaign workshop: exercise in neuromuscular diseases Newcastle, January 2002. *Neuromuscul Disord* 2002; **12**: 975–83.
- 38 Vignos PJ Jr, Watkins MP. The effect of exercise in muscular dystrophy. *JAMA* 1966; **197**: 843–48.
- 39 Scott OM, Hyde SA, Goddard C, Jones R, Dubowitz V. Effect of exercise in Duchenne muscular dystrophy. *Physiotherapy* 1981; **67**: 174–76.
- 40 de Lateur BJ, Giaconi RM. Effect on maximal strength of submaximal exercise in Duchenne muscular dystrophy. *Am J Phys Med* 1979; **58**: 26–36.
- 41 Fowler WM Jr. Importance of overwork weakness. *Muscle Nerve* 1984; **7**: 496–99.
- 42 Armstrong RB, Warren GL, Warren JA. Mechanisms of exercise-induced muscle fibre injury. *Sports Med* 1991; **12**: 184–207.
- 43 Fowler WM Jr, Taylor M. Rehabilitation management of muscular dystrophy and related disorders: I. The role of exercise. *Arch Phys Med Rehabil* 1982; **63**: 319–21.
- 44 Fowler WM Jr. Role of physical activity and exercise training in neuromuscular diseases. *Am J Phys Med Rehabil* 2002; **81** (suppl): S187–95.
- 45 McDonald CM. Physical activity, health impairments, and disability in neuromuscular disease. *Am J Phys Med Rehabil* 2002; **81** (suppl): S108–20.
- 46 Sockolov R, Irwin B, Dressendorfer RH, Bernauer EM. Exercise performance in 6-to-11-year-old boys with Duchenne muscular dystrophy. *Arch Phys Med Rehabil* 1977; **58**: 195–201.
- 47 Petrof BJ. The molecular basis of activity-induced muscle injury in Duchenne muscular dystrophy. *Mol Cell Biochem* 1998; **179**: 111–23.
- 48 Ansved T. Muscular dystrophies: influence of physical conditioning on the disease evolution. *Curr Opin Clin Nutr Metab Care* 2003; **6**: 435–39.
- 49 Allen DG. Eccentric muscle damage: mechanisms of early reduction of force. *Acta Physiol Scand* 2001; **171**: 311–19.
- 50 Garrood P, Eagle M, Jardine PE, Bushby K, Straub V. Myoglobinuria in boys with Duchenne muscular dystrophy on corticosteroid therapy. *Neuromuscul Disord* 2008; **18**: 71–73.
- 51 Smith AD, Koreska J, Moseley CF. Progression of scoliosis in Duchenne muscular dystrophy. *J Bone Joint Surg Am* 1989; **71**: 1066–74.
- 52 Alman BA, Raza SN, Biggar WD. Steroid treatment and the development of scoliosis in males with Duchenne muscular dystrophy. *J Bone Joint Surg Am* 2004; **86**: 519–24.
- 53 Yilmaz O, Karaduman, Topaloglu H. Prednisolone therapy in Duchenne muscular dystrophy prolongs ambulation and prevents scoliosis. *Eur J Neurol* 2004; **11**: 541–44.
- 54 Talim B, Malaguti C, Gnudi S, Politano L, Merlini L. Vertebral compression in Duchenne muscular dystrophy following deflazacort. *Neuromuscul Disord* 2002; **12**: 294–95.
- 55 Bothwell JE, Gordon KE, Dooley JM, Mac Sween J, Cummings EA, Salisbury S. Vertebral fractures in boys with Duchenne muscular dystrophy. *Clin Pediatr* 2003; **42**: 353–56.
- 56 Velasco MV, Colin AA, Zurakowski D, Darras BT, Shapiro F. Posterior spinal fusion for scoliosis in Duchenne muscular dystrophy diminishes the rate of respiratory decline. *Spine* 2007; **32**: 459–65.
- 57 Shapiro F, Sethna N, Colan S, Wohl ME, Specht L. Spinal fusion in Duchenne muscular dystrophy: a multidisciplinary approach. *Muscle Nerve* 1992; **15**: 604–14.
- 58 Heller KD, Wirtz DC, Siebert CH, Forst R. Spinal stabilization in Duchenne muscular dystrophy: principles of treatment and record of 31 operative treated cases. *J Pediatr Orthop* 2001; **10**: 18–24.
- 59 Alman BA, Kim HKW. Pelvic obliquity after fusion of the spine in Duchenne muscular dystrophy. *J Bone Joint Surg Br* 1999; **81**: 821–24.
- 60 Sengupta DK, Mehdian SH, McConnell JR, Eisenstein SM, Webb JK. Pelvic or lumbar fixation for the surgical management of scoliosis in Duchenne muscular dystrophy. *Spine* 2002; **27**: 2072–79.
- 61 Quinlivan R, Roper H, Davie M, et al. Report of a Muscular Dystrophy Campaign funded workshop Birmingham, UK, January 16th 2004. Osteoporosis in Duchenne muscular dystrophy: its prevalence, treatment and prevention. *Neuromuscul Disord* 2005; **15**: 72–79.
- 62 Biggar WD, Bachrach LK, Henderson RC, Kalkwarf H, Plotkin H, Wong BL. Bone health in Duchenne muscular dystrophy. *Neuromuscul Disord* 2005; **15**: 80–85.
- 63 McDonald DGM, Kinali M, Gallagher AC, et al. Fracture prevalence in Duchenne muscular dystrophy. *Dev Med Child Neurol* 2002; **44**: 695–98.
- 64 Phillips MF, Quinlivan CM, Edwards RH, Calverley PM. Changes in spirometry over time as a prognostic marker in patients with Duchenne muscular dystrophy. *Am J Respir Crit Care Med* 2001; **164**: 2191–94.
- 65 Eagle M, Baudouin SV, Chandler C, Giddings DR, Bullock R, Bushby K. Survival in Duchenne muscular dystrophy: improvements in life expectancy since 1967 and the impact of home nocturnal ventilation. *Neuromuscul Disord* 2002; **12**: 926–29.

- 66 Gomez-Merino E, Bach JR. Duchenne muscular dystrophy: prolongation of life by noninvasive ventilation and mechanically assisted coughing. *Am J Phys Med Rehabil* 2002; **81**: 411–15.
- 67 Bach JR, Saporito LR. Criteria for extubation and tracheostomy tube removal for patients with ventilatory failure: a different approach to weaning. *Chest* 1996; **110**: 1566–71.
- 68 Dohna-Schwake C, Ragette R, Teschler H, Voit T, Mellies U. Predictors of severe chest infections in pediatric neuromuscular disorders. *Neuromuscul Disord* 2006; **16**: 325–28.
- 69 Bianchi C, Baiardi P. Cough peak flows: standard values for children and adolescents. *Am J Phys Med Rehabil* 2008; **87**: 461–67.
- 70 Kang SW, Bach JR. Maximum insufflation capacity: vital capacity and cough flows in neuromuscular disease. *Am J Phys Med Rehabil* 2000; **79**: 222–27.
- 71 Daftary AS, Crisanti M, Kalra M, Wong B, Amin R. Effect of long-term steroids on cough efficiency and respiratory muscle strength in patients with Duchenne muscular dystrophy. *Pediatrics* 2007; **117**: e320–24.
- 72 Gauld LM, Boynton A. Relationship between peak cough flow and spirometry in Duchenne muscular dystrophy. *Pediatr Pulmonol* 2005; **39**: 457–60.
- 73 Suarez AA, Pessolano FA, Monteiro SG, et al. Peak flow and peak cough flow in the evaluation of expiratory muscle weakness and bulbar impairment in patients with neuromuscular disease. *Am J Phys Med Rehabil* 2002; **81**: 506–11.
- 74 Domenech-Clar R, Lopez-Andreu JA, Compte-Torrero L, et al. Maximal static respiratory pressures in children and adolescents. *Pediatr Pulmonol* 2003; **35**: 126–32.
- 75 Szeinberg A, Tabachnik E, Rashed N, et al. Cough capacity in patients with muscular dystrophy. *Chest* 1988; **94**: 1232–35.
- 76 Smith PE, Calverley PM, Edwards RH. Hypoxemia during sleep in Duchenne muscular dystrophy. *Am Rev Respir Dis* 1988; **137**: 884–88.
- 77 Phillips MF, Smith PE, Carroll N, Edwards RH, Calverley PM. Nocturnal oxygenation and prognosis in Duchenne muscular dystrophy. *Am J Respir Crit Care Med* 1999; **160**: 198–202.
- 78 Hukins CA, Hillman DR. Daytime predictors of sleep hypoventilation in Duchenne muscular dystrophy. *Am J Respir Crit Care Med* 2000; **161**: 166–70.
- 79 Ragette R, Mellies U, Schwake C, Voit T, Teschler H. Patterns and predictors of sleep disordered breathing in primary myopathies. *Thorax* 2002; **57**: 724–28.
- 80 Khan Y, Heckmatt JZ. Obstructive apnoeas in Duchenne muscular dystrophy. *Thorax* 1994; **49**: 157–61.
- 81 Barbe F, Quera-Salva MA, McCann C, et al. Sleep-related respiratory disturbances in patients with Duchenne muscular dystrophy. *Eur Respir J* 1994; **7**: 1403–08.
- 82 Uliel S, Tauman R, Greenfeld M, Sivan Y. Normal polysomnographic respiratory values in children and adolescents. *Chest* 2004; **125**: 872–78.
- 83 Toussaint M, Steens M, Soudon P. Lung function accurately predicts hypercapnia in patients with Duchenne muscular dystrophy. *Chest* 2007; **131**: 368–75.
- 84 Culebras A. Sleep-disordered breathing in neuromuscular disease. *Sleep Med Clin* 2008; **3**: 377–86.
- 85 Finder JD, Birnkrant D, Carl J, et al. Respiratory care of the patient with Duchenne muscular dystrophy: an official ATS consensus statement. *Am J Respir Crit Care Med* 2004; **170**: 456–65.
- 86 Ward S, Chatwin M, Heather S, Simonds AK. Randomised controlled trial of non-invasive ventilation (NIV) for nocturnal hypoventilation in neuromuscular and chest wall disease patients with daytime normocapnia. *Thorax* 2005; **60**: 1019–24.
- 87 Bach JR, Alba AS. Management of chronic alveolar hypoventilation by nasal ventilation. *Chest* 1990; **97**: 52–57.
- 88 Mellies U, Ragette R, Dohna Schwake C, Boehm H, Voit T, Teschler H. Long-term noninvasive ventilation in children and adolescents with neuromuscular disorders. *Eur Respir J* 2003; **22**: 631–36.
- 89 Simonds AK, Muntoni F, Heather S, Fielding S. Impact of nasal ventilation on survival in hypercapnic Duchenne muscular dystrophy. *Thorax* 1998; **53**: 949–52.
- 90 Piastra M, Antonelli M, Caresta E, Chiaretti A, Polidori G, Conti G. Noninvasive ventilation in childhood acute neuromuscular respiratory failure. *Respiration* 2006; **73**: 791–98.
- 91 Niranjan V, Bach JR. Noninvasive management of pediatric neuromuscular respiratory failure. *Crit Care Med* 1998; **26**: 2061–65.
- 92 Bach JR, Bianchi C, Vidigal-Lopes M, Turi S, Felisari G. Lung inflation by glossopharyngeal breathing and air stacking in Duchenne muscular dystrophy. *Am J Phys Med Rehabil* 2007; **86**: 295–300.
- 93 Bach JR, Kang SW. Disorders of ventilation: weakness, stiffness and mobilization. *Chest* 2000; **117**: 301–03.
- 94 Misuri G, Lanini B, Gigliotti F, et al. Mechanism of CO₂ retention in patients with neuromuscular disease. *Chest* 2000; **117**: 447–53.
- 95 Tzeng AC, Bach JR. Prevention of pulmonary morbidity for patients with neuromuscular disease. *Chest* 2000; **118**: 1390–96.
- 96 Dohna-Schwake C, Ragette R, Teschler H, Voit T, Mellies U. IPPB-assisted coughing in neuromuscular disorders. *Pediatr Pulmonol* 2006; **41**: 551–57.
- 97 Miske LJ, Hickey EM, Kolb SM, Weiner DJ, Panitch HB. Use of the mechanical in-exsufflator in pediatric patients with neuromuscular disease and impaired cough. *Chest* 2004; **125**: 1406–12.
- 98 Boitano JL. Management of airway clearance in neuromuscular disease. *Respir Care* 2006; **51**: 913–22.
- 99 Fauroux B, Guillemot N, Aubertin G, et al. Physiological benefits of mechanical insufflation-exsufflation in children with neuromuscular diseases. *Chest* 2008; **133**: 161–68.
- 100 Chatwin M, Ross E, Hart N, Nickol AH, Polkey MI, Simonds AK. Cough augmentation with mechanical insufflation/exsufflation in patients with neuromuscular weakness. *Eur Respir J* 2003; **21**: 502–08.
- 101 Winck JC, Goncalves MR, Lourenco C, Viana P, Almeida J, Bach JR. Effects of mechanical insufflation-exsufflation on respiratory parameters for patients with chronic airway secretion encumbrance. *Chest* 2004; **126**: 774–80.
- 102 Homnick DN. Mechanical insufflation-exsufflation for airway mucus clearance. *Respir Care* 2007; **52**: 1296–307.
- 103 Smith PE, Edwards RH, Calverley PM. Oxygen treatment of sleep hypoxaemia in Duchenne muscular dystrophy. *Thorax* 1989; **44**: 997–1001.
- 104 American Academy of Pediatrics Section on Cardiology and Cardiac Surgery. Cardiovascular health supervision for individuals affected by Duchenne or Becker muscular dystrophy. *Pediatrics* 2005; **116**: 1569–73.
- 105 Chenard AA, Becane HM, Tertraïn F, de Kermadec JM, Weiss YA. Ventricular arrhythmia in Duchenne muscular dystrophy: prevalence, significance and prognosis. *Neuromuscul Disord* 1993; **3**: 201–06.
- 106 de Kermadec JM, Bécane HM, Chénard A, Tertraïn F, Weiss Y. Prevalence of left ventricular systolic dysfunction in Duchenne muscular dystrophy: an echocardiographic study. *Am Heart J* 1994; **127**: 618–23.
- 107 Moriuchi T, Kagawa N, Mukoyama M, Hizawa K. Autopsy analyses of the muscular dystrophies. *Tokushima J Exp Med* 1993; **40**: 83–93.
- 108 McNally E. New approaches in the therapy of cardiomyopathy in muscular dystrophy. *Annu Rev Med* 2007; **58**: 75–88.
- 109 Giglio V, Pasceri V, Messano L, et al. Ultrasound tissue characterization detects preclinical myocardial structural changes in children affected by Duchenne muscular dystrophy. *J Am Coll Cardiol* 2003; **42**: 309–16.
- 110 Sasaki K, Sakata K, Kachi E, Hirata S, Ishihara T, Ishikawa K. Sequential changes in cardiac structure and function in patients with Duchenne type muscular dystrophy: a two-dimensional echocardiographic study. *Am Heart J* 1998; **135**: 937–44.
- 111 Takenaka A, Yokota M, Iwase M, Miyaguchi K, Hayashi H, Saito H. Discrepancy between systolic and diastolic dysfunction of the left ventricle in patients with Duchenne muscular dystrophy. *Eur Heart J* 1993; **14**: 669–76.
- 112 Nigro G, Comi LI, Politano L, Nigro V. Dilated cardiomyopathy of muscular dystrophy: a multifaceted approach to management. *Semin Neurol* 1995; **15**: 90–92.
- 113 Bushby K, Muntoni F, Bourke JP. 107th ENMC International Workshop: the management of cardiac involvement in muscular dystrophy and myotonic dystrophy. 7th–9th June 2002, Naarden, the Netherlands. *Neuromuscul Disord* 2003; **13**: 166–72.
- 114 Vita GL, Kirk R, Lochmüller H, Bushby K, Straub V. Early cardiomyopathy in DMD [abstract GP.13.10]. *Neuromuscul Disord* 2009; **19**: 642.

- 115 Hunt SA, Abraham WT, Chin MH, et al. ACC/AHA 2005 guideline update for the diagnosis and management of chronic heart failure in the adult: a report of the American College of Cardiology/American Heart Association Task Force on Practice Guidelines (Writing Committee to Update the 2001 Guidelines for the Evaluation and Management of Heart Failure). *Circulation* 2005; **112**: 1825–52.
- 116 Saito T, Matsumura T, Miyai I, Nozaki S, Shinno S. Carvedilol effectiveness for left ventricular-insufficient patients with Duchenne muscular dystrophy. *Rinsho Shinkeigaku* 2001; **41**: 691–94.
- 117 Ishikawa Y, Bach JR, Minami R. Cardioprotection for Duchenne's muscular dystrophy. *Am Heart J* 1999; **137**: 895–902.
- 118 Shaddy RE, Tani LY, Gidding SS, et al. Beta-blocker treatment of dilated cardiomyopathy with congestive heart failure in children: a multi-institutional experience. *J Heart Lung Transplant* 1999; **18**: 269–74.
- 119 Duboc D, Meune C, Lerebours G, Devaux JY, Vaksman G, Bécane HM. Effect of perindopril on the onset and progression of left ventricular dysfunction in Duchenne muscular dystrophy. *J Am Coll Cardiol* 2005; **45**: 855–57.
- 120 Jefferies JL, Eidem BW, Belmont JW, et al. Genetic predictors and remodeling of dilated cardiomyopathy in muscular dystrophy. *Circulation* 2005; **112**: 2799–804.
- 121 Duboc D, Meune C, Pierre B, et al. Perindopril preventive treatment on mortality in Duchenne muscular dystrophy: 10 years' follow-up. *Am Heart J* 2007; **154**: 596–602.
- 122 Meune C, Duboc D. How should physicians manage patients with Duchenne muscular dystrophy when experts' recommendations are not unanimous? *Dev Med Child Neurol* 2006; **48**: 863–64.
- 123 Bourke JP. Cardiac monitoring and treatment for children and adolescents with neuromuscular disorders. *Dev Med Child Neurol* 2006; **48**: 164.
- 124 Yotsukura M, Fujii K, Katayama A, et al. Nine-year follow-up study of heart rate variability in patients with Duchenne-type progressive muscular dystrophy. *Am Heart J* 1998; **136**: 289–96.
- 125 Yotsukura M, Sasaki K, Kachi E, Sasaki A, Ishihara T, Ishikawa K. Circadian rhythm and variability of heart rate in Duchenne-type progressive muscular dystrophy. *Am J Cardiol* 1995; **76**: 947–51.
- 126 Lanza GA, Dello Russo A, Giglio V, et al. Impairment of cardiac autonomic function in patients with Duchenne muscular dystrophy: relationship to myocardial and respiratory function. *Am Heart J* 2001; **141**: 808–12.
- 127 Corrado G, Lissoni A, Beretta S, et al. Prognostic value of electrocardiograms, ventricular late potentials, ventricular arrhythmias, and left ventricular systolic dysfunction in patients with Duchenne muscular dystrophy. *Am J Cardiol* 2002; **89**: 838–41.
- 128 Kleinman RE, ed. Pediatric nutrition handbook (6th edn). Elk Grove Village, IL: Academy of Pediatrics Press, 2009.
- 129 Douvillez B, Braillon P, Hodgkinson I, Berard C. Pain, osteopenia and body composition of 22 patients with Duchenne muscular dystrophy: a descriptive study. *Ann Readapt Med Phys* 2005; **48**: 616–22.
- 130 McCrory MA, Wright NC, Kilmer DD. Nutritional aspects of neuromuscular disease. *Phys Med Rehabil Clin North Am* 1998; **9**: 127.
- 131 Willig TN, Carlier L, Legrand M, Riviere H, Navarro J. Nutritional assessment in Duchenne muscular dystrophy. *Dev Med Child Neurol* 1993; **35**: 1074.
- 132 Willig TN, Bach JR, Venance V, Navarro J. Nutritional rehabilitation in neuromuscular disorders. *Semin Neurol* 1995; **15**: 18.
- 133 Jaffe KM, McDonald CM, Ingman E, Haas J. Symptoms of upper gastrointestinal dysfunction in Duchenne muscular dystrophy: case-control study. *Arch Phys Med Rehabil* 1990; **71**: 742–44.
- 134 Logemann JA. Evaluation and treatment of swallowing disorders (2nd edn). Austin, TX: ProEd Inc., 1998.
- 135 Bach JR. Management of patients with neuromuscular disease. Philadelphia: Hanley & Belfus, 2004.
- 136 Pane M, Vasta I, Messina S, et al. Feeding problems and weight gain in Duchenne muscular dystrophy. *Eur J Paediatr Neurol* 2006; **10**: 231–36.
- 137 Hanayama K, Liu M, Higuchi Y, et al. Dysphagia in patients with Duchenne muscular dystrophy evaluated with a questionnaire and videofluorography. *Disabil Rehabil* 2008; **30**: 517–22.
- 138 Nozaki S, Umaki Y, Sugishita S, Tataru K, Adachi K, Shinno S. Videofluorographic assessment of swallowing function in patients with Duchenne muscular dystrophy. *Rinsho Shinkeigaku* 2007; **47**: 407–12.
- 139 Aloysius A, Born P, Kinali M, Davis T, Pane M, Mercuri E. Swallowing difficulties in Duchenne muscular dystrophy: indications for feeding assessment and outcome of videofluoroscopic swallowing studies. *Eur J Paediatr Neurol* 2008; **12**: 239–45.
- 140 Shinonaga C, Fukuda M, Suzuki Y, et al. Evaluation of swallowing function in Duchenne muscular dystrophy. *Dev Med Child Neurol* 2008; **50**: 478–80.
- 141 Zickler RW, Barbagiovanni JT, Swan KG. A simplified open gastrostomy under local anesthesia. *Am Surg* 2001; **67**: 806–08.
- 142 Gottrand F, Guillonnet I, Carpentier A. Segmental colonic transit time in Duchenne muscular dystrophy. *Arch Dis Child* 1991; **66**: 1262.
- 143 Tilton AH, Miller MD, Khoshoo V. Nutrition and swallowing in pediatric neuromuscular patients. *Semin Paediatr Neurol* 1998; **5**: 106–15.
- 144 Cyrulnik SE, Fee RJ, De Vivo DC, Goldstein E, Hinton VJ. Delayed developmental language milestones in children with Duchenne's muscular dystrophy. *J Paediatr* 2007; **150**: 474–78.
- 145 Zebracki K, Drotar D. Pain and activity limitations in children with Duchenne or Becker muscular dystrophy. *Dev Med Child Neurol* 2008; **50**: 546–52.
- 146 Engel JM, Kartin D, Jaffe KM. Exploring chronic pain in youths with Duchenne muscular dystrophy: a model for pediatric neuromuscular disease. *Phys Med Rehabil Clin North Am* 2005; **16**: 1113–24, xii.
- 147 Knopp JA, Diner BM, Blitz M, Lyritis GP, Rowe BH. Calcitonin for treating acute pain of osteoporotic vertebral compression fractures: a systematic review of randomized, controlled trials. *Osteoporos Int* 2005; **16**: 1281–90.
- 148 Armingeat T, Brondino R, Pham T, Legré V, Lafforgue P. Intravenous pamidronate for pain relief in recent osteoporotic vertebral compression fracture: a randomized double-blind controlled study. *Osteoporos Int* 2006; **17**: 1659–65.
- 149 Hoffman AJ, Jensen MP, Abresch RT, Carter GT. Chronic pain in persons with neuromuscular disease. *Phys Med Rehabil Clin North Am* 2005; **16**: 1099–112.
- 150 Jensen MP, Abresch RT, Carter GT, McDonald CM. Chronic pain in persons with neuromuscular disease. *Arch Phys Med Rehabil* 2005; **86**: 1155–63.
- 151 Ames WA, Hayes JA, Crawford MW. The role of corticosteroids in Duchenne muscular dystrophy: a review for the anesthetist. *Paediatr Anaesth* 2005; **15**: 3–8.
- 152 Hayes J, Veyckemans F, Bissonnette B. Duchenne muscular dystrophy: an old anesthesia problem revisited. *Pediatr Anesth* 2008; **18**: 100–06.
- 153 Yemen TA, McClain C. Muscular dystrophy, anesthesia and the safety of inhalational agents revisited, again. *Paediatr Anaesth* 2006; **16**: 105–08.
- 154 Shapiro F, Zurakowski D, Sethna NF. Tranexamic acid diminishes intraoperative blood loss and transfusion in spinal fusions for Duchenne muscular dystrophy scoliosis. *Spine* 2007; **32**: 2278–83.
- 155 Birnkrant DJ, Panitch HB, Benditt JO, et al. American College of Chest Physicians consensus statement on the respiratory and related management of patients with Duchenne muscular dystrophy undergoing anesthesia or sedation. *Chest* 2007; **132**: 1977–86.
- 156 Bach JR, Sabharwal S. High pulmonary risk scoliosis surgery: role of noninvasive ventilation and related techniques. *J Spinal Disord Tech* 2005; **18**: 527–30.
- 157 Lumbierres M, Prats E, Farrero E, et al. Noninvasive positive pressure ventilation prevents postoperative pulmonary complications in chronic ventilator users. *Respir Med* 2007; **101**: 62–68.

Erratum

Bushby K, Finkel R, Birnkrant DJ, et al. Diagnosis and management of Duchenne muscular dystrophy, part 2: implementation of multidisciplinary care. *Lancet Neurol* 2010; **9**: 177–89. On page 185 of this Review (published Online First on Nov 30, 2009), in the paragraph entitled 'Emergency-care considerations' the sentence on the use of opiates should have read "Care in the use of opiates and other sedating medication is essential, as is care in the use of oxygen without ventilation owing to the risk of hypercapnia."